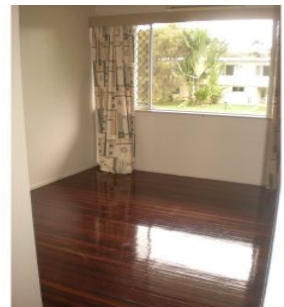


Harcourts Kingsberry



10 Azalea Street AITKENVALE QLD

3 1 2

This large high set home is located in the popular suburb of Aitkenvale & features:

Air conditioning throughout.

3 bedrooms with a walk in wardrobe to the main & built in wardrobes to the other 2 bedrooms.

Study.

Ceiling fans.

Polished floors throughout.

Spacious modern kitchen with a large walk in pantry.

Walk in linen cupboard.

Front and back patio

Fly screens & security screens through-out.

Lockable parking underneath as well as a huge enclosed area + plus an extra lockable room which is perfect for storage.

View : <https://www.kingsberry.com.au/lease/qld/townsville-e-district/aitkenvale/residential/house/4324559>



Ben Kingsberry

07 4772 2022

0438 792 652

ben.kingsberry@tsvharcourts.com.au