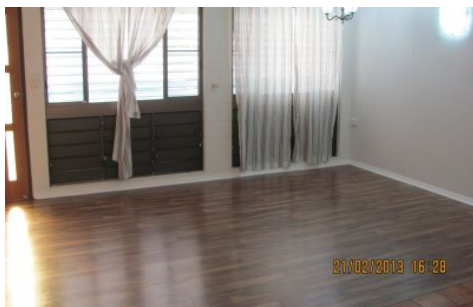


# Harcourts Kingsberry



## 3/35 Bayswater Road HYDE PARK QLD

2 1 1

Do not miss out on this affordable, two bedroom unit ideally located close to Castletown Shopping World, public transport etc. This quaint little unit is in a quiet neighbourhood street centrally located off Bayswater Road. Recently renovated flooring and fittings.

Experience quality living without the pricetag.

This two bedroom unit features:

- Two bedrooms
- Built ins to both bedrooms
- Airconditioning to living room and main bedroom
- Tiles, featuring a timber look floating floor
- Ceiling fans throughout
- Single Carport

**View :** <https://www.kingsberry.com.au/lease/qld/townsvill-e-district/hyde-park/residential/unit/4324762>



**Ben Kingsberry**  
07 4772 2022  
0438 792 652  
[ben.kingsberry@tsvharcourts.com.au](mailto:ben.kingsberry@tsvharcourts.com.au)