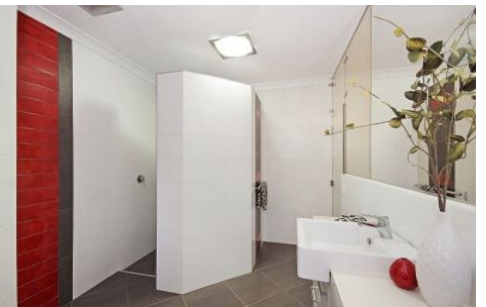


# Harcourts Kingsberry



## 29 Keeper Court MOUNT LOUISA QLD

5  2  2 

Below replacement cost; this wonderful near new build optimises the North Queensland lifestyle honouring the way we love to live with a 65sqm rear undercover verandah with connectivity to kitchen, dining and theatre room.

The real stand out feature is the Gourmet Kitchen, truly the hub of the home with breakfast bar and dual oversized preparation benches.

Vaulted ceilings add to the space sensation, wheelchair access also makes extended family options viable while parking for trailers or boat is additional to the 40sqm garage.

Situated on a 964sqm this large family home has options to cater for your families entire wish list.

**Price** : \$ 621,501  
**Land Size** : 964 sqm  
**View** : <https://www.kingsberry.com.au/sale/qld/townsville-district/mount-louisa/residential/house/4326233>



Ben Kingsberry  
07 4772 2022  
0438 792 652  
[ben.kingsberry@tsvharcourts.com.au](mailto:ben.kingsberry@tsvharcourts.com.au)