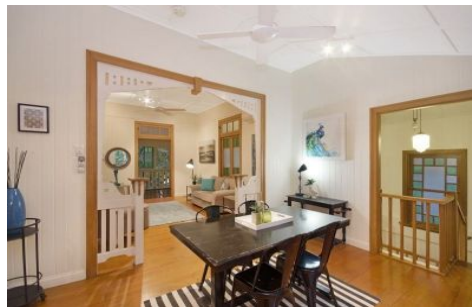


# Harcourts Kingsberry



## 15 Chapman Street MYSTERTON QLD

4 2 4

This wonderful porch and gable home built by the renowned Baxter Brothers in 1932 retains all that we love, while integrating understated sophistication.

Traditional features include polished timber flooring, VJ walls, ornate fretwork, original archways, and extended ceilings. French doors, incredible stained glass features and window hoods complete the authenticity of such a majestic home. The fusion of this local history with sublime practicality offers a rare opportunity to purchase such a high quality family home in one of Townsville's premier Streets. Spanning over two levels this lady offers an abundance of space, reside as you please as versatility is one of this homes greatest qualities.

Your sanctuary is completed with the most divine tropically landscaped yard; Beautiful lush gardens surround the

**Price** : \$ 735,000  
**Land Size** : 911 sqm  
**View** : <https://www.kingsberry.com.au/sale/qld/townsville-district/mysterton/residential/house/4326259>



Ben Kingsberry  
07 4772 2022  
0438 792 652  
[ben.kingsberry@tsvharcourts.com.au](mailto:ben.kingsberry@tsvharcourts.com.au)