

Harcourts Kingsberry



9 Kulwin Court ANNANDALE QLD

3  2  2 

It is a pleasure to present to the market, for the first time, this meticulously well-loved home.

This impressive property was constructed with relaxed family living and entertaining in mind. It showcases three sizeable bedrooms, two bathrooms, multiple living areas and an intelligent floor design to create an incredible, family friendly home.

With superior style and sophistication, the open plan, gourmet kitchen is a chef's delight and the beating heart of the home. Quality fixtures and finishes, expansive breakfast bar, extensive bench and cupboard storage, ensure a well-appointed space that is sure to impress those that love entertaining.

Looking for more? Check out the generous rumpus room, ideal for formal dining, a kid's activity room or relaxing retreat, - your choice. Saunter to your covered al-fresco entertaining area - perfect for all year round comfort,

Price : \$ 380,000

Land Size : 528 sqm

View : <https://www.kingsberry.com.au/sale/qld/townsville-district/annandale/residential/house/4326262>

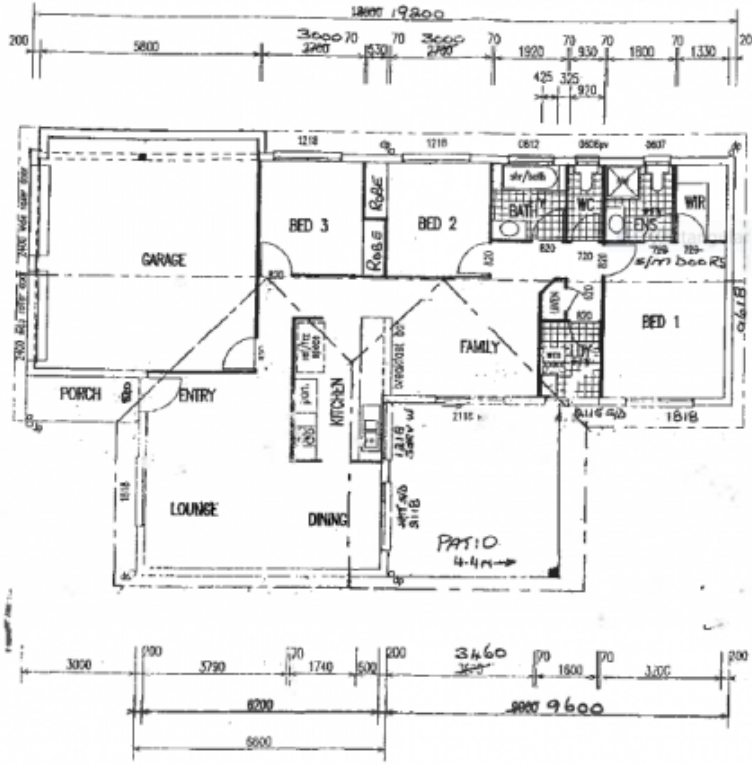


Tammy Tyrrell

07 4772 2022

0412 534 704

tammy.tyrrell@tsvharcourts.com.au



Living	117.04 Sqm
Garage	34.28 Sqm
Porch	3.80 Sqm
TOTAL	154.92 Sqm