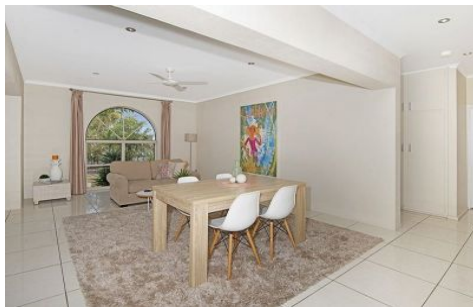


Harcourts Kingsberry



49 Philp Street HERMIT PARK QLD

3 1 1

It's arrived, lowset and low maintenance right on the City doorstep.

This home is a brilliant option for family and couples alike who will love the prospect of no rear neighbours and the ever-changing profile of our beautiful Castle Hill.

On entering; it will be the massive open living space that will be appreciated and will give new owners the opportunity to configure as they wish and live as they will. The kitchen is warm and has a sense of family with timber cabinetry leading on to a tiled and covered back patio.

Lock up car accommodation and a magnificent 1012m2 block with parkland as your neighbour will be like finding a four leaf clover in your real estate search - To Be Sure, To Be Sure.

Price : \$ 342,000
Land Size : 1012 sqm
View : <https://www.kingsberry.com.au/sale/qld/townsville-district/hermit-park/residential/house/4326295>



Ben Kingsberry
07 4772 2022
0438 792 652
ben.kingsberry@tsvharcourts.com.au