

Harcourts Kingsberry



9 Cleveland Terrace NORTH WARD QLD

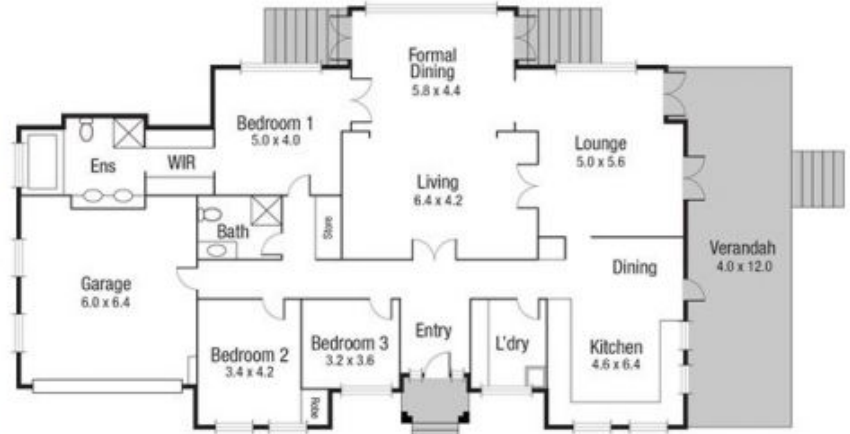
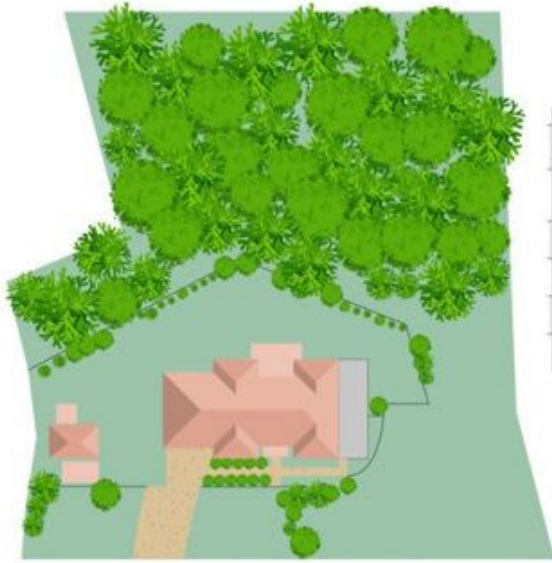
3  2  3 

Nine Cleveland Terrace encompasses world class ocean views and sits atop an unparalleled 3656 meters over two allotments with two street frontages. Originally built for Colonel North and secured by local business visionaries Max and Phoebe Short in 1973, this iconic Californian Bungalow C1936 presents an opportunity rarely offered in the market. The home itself has been beautifully maintained and offers magnificent entertaining spaces both formal and informal, while the veranda and impressive level manicured lawn have hosted many a social occasion. However, accolades must be given to the retention of character detailing, solidarity of construction and extensions honouring its incredible positioning encompassing panoramic views of the Pallarenda sweep, Magnetic Island and Castle Hill. This home is truly a rare offering; it lends itself to future development (STCA) or for the next family and generations to follow.

Price : \$ 1,825,000
Land Size : 3636 sqm
View : <https://www.kingsberry.com.au/sale/qld/townsville-district/north-ward/residential/house/4326664>



Ben Kingsberry
07 4772 2022
0438 792 652
ben.kingsberry@tsvharcourts.com.au



AREA	
INT	: 243.6 sq.m
EXT	: 51 sq.m
TOTAL	: 294.6 sq.m

Scale in metres. Indicative only. Dimensions are approximate. All information contained herein is gathered from sources we believe to be reliable. However we cannot guarantee its accuracy and interested persons should rely on their own enquiries.

9 Cleveland