

Harcourts Kingsberry



3/2 Victoria Street TOWNSVILLE CITY QLD

2 1 1

Perfectly positioned on Stanton Hill overlooking the CBD to the south and Queens Gardens and Pallarenda to the north this 123sqm unit really is in a top location. When it comes to lifestyle this property ticks all the boxes, being only a short walk to the city centre, the walking tracks of Castle Hill and The Strand. It is an older style unit with an internal living space bigger than many three-bedroom houses. In fact, one bedroom has been extended to double its size. It is currently leased at \$240pw until November and the tenant has said he is happy to stay if an investor purchases this property.

Price : \$ 215,000
Land Size : 123 sqm
View : <https://www.kingsberry.com.au/sale/qld/townsville-district/townsville-city/residential/unit/4326704>

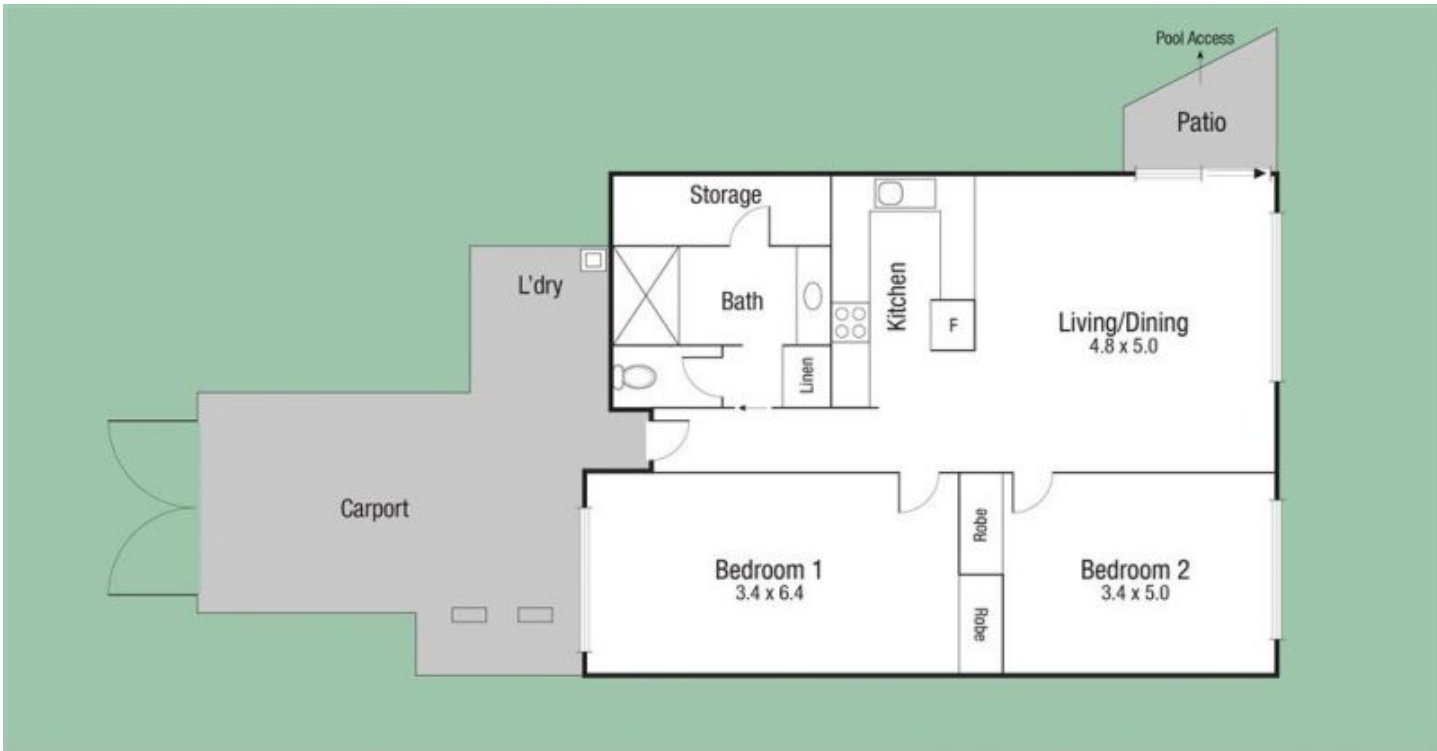


Malcolm Thomson
07 4772 2022
0400 545 664
malcolm.thomson@tsvharcourts.com.au

- Open plan living and dining
- Original kitchen and bathroom

<https://www.kingsberry.com.au>

210 Charters Towers Road Hermit Park QLD
07 47 722 022



Scale in metres. Indicative only. Dimensions are approximate. All information contained herein is gathered from sources we believe to be reliable. However we cannot guarantee its accuracy and interested persons should rely on their own enquiries.

AREA	
INT	: 90.3 sq.m
EXT	: 36.2 sq.m
TOTAL	: 126.5 sq.m

3/2 Victoria