

Harcourts Kingsberry



2/3 Esplanade NELLY BAY QLD

4 2 2

This high-set beachfront home has commanding views over Cleveland Bay - yet remains secluded as the trees of the front garden provide privacy - and welcome shade in the height of summer.

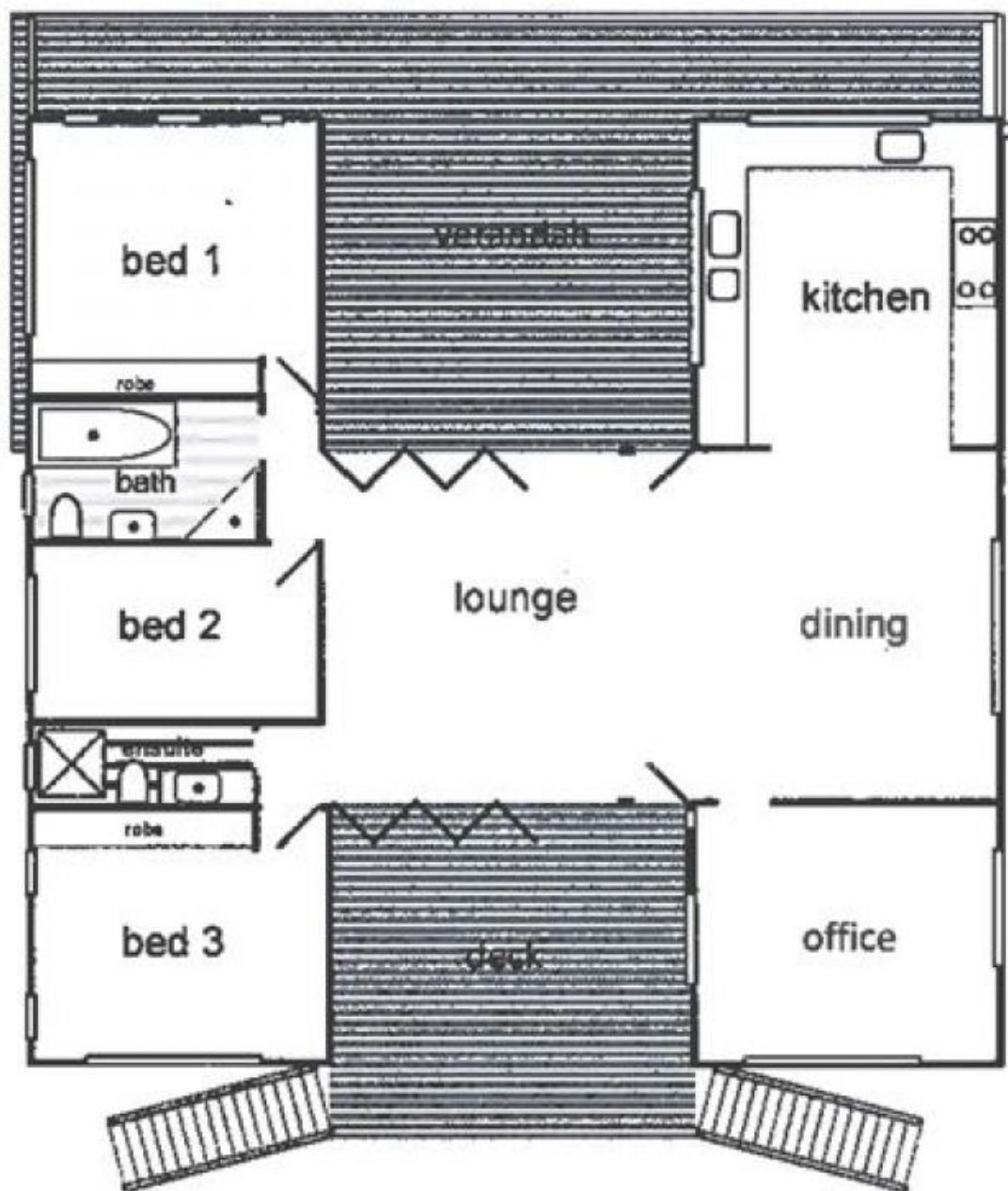
The home was designed on passive cooling principles and built of steel portal frames allowing high ceilings and high ventilating windows. Each room has windows on three sides so every breeze is caught (bathrooms have 2 sides). The main living area has two slow-moving extra-large fans. The current configuration of the home is 2 x queen bedrooms each with built in wardrobes with split system air conditioning; 1 x single bedroom with split system air conditioning; 1 x bathroom with extra-long bath and separate shower, 1 x shower room;

1 x dedicated office set up with two built-in workspaces and built in cupboards (phone points enter the home here, 2 lines available) with split system air conditioning;

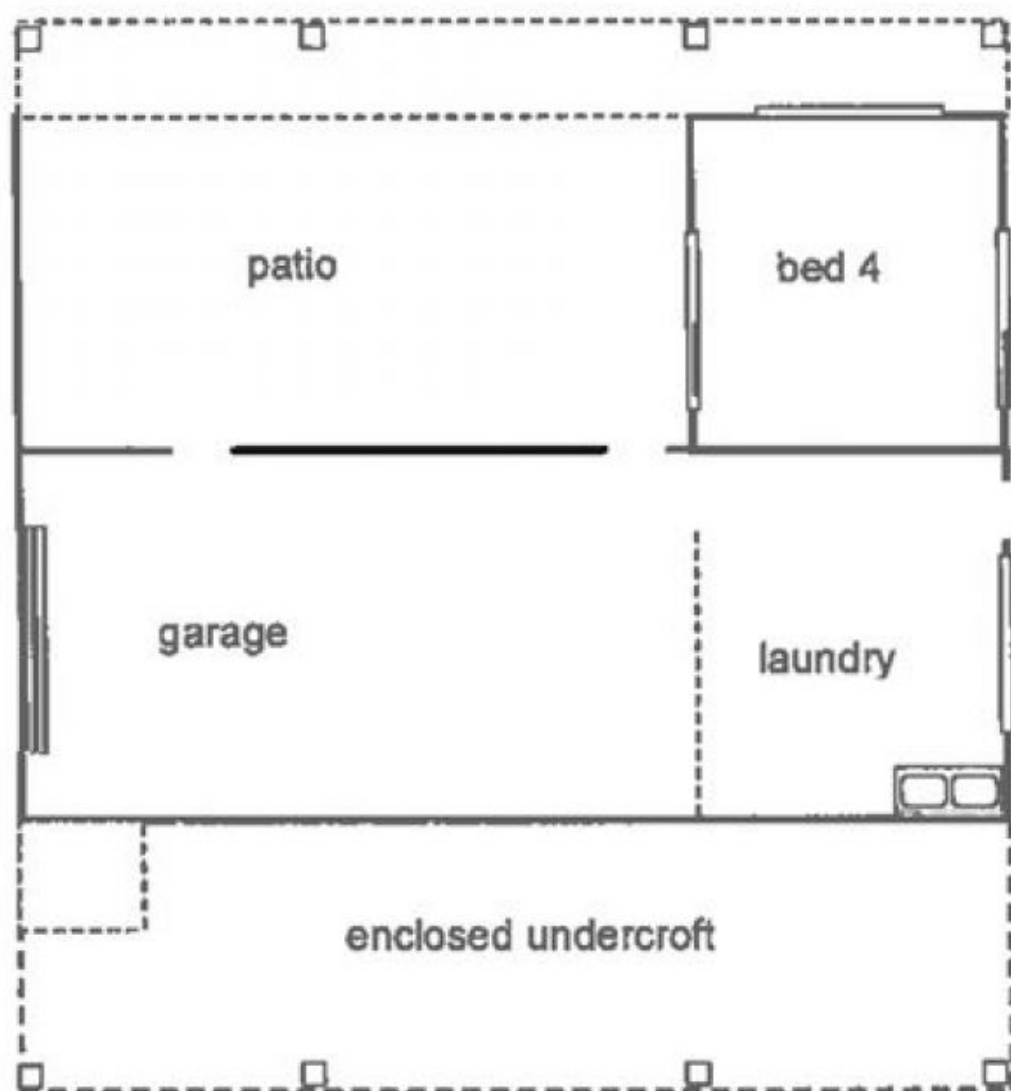
Price : \$ 775,000
Land Size : 957 sqm
View : <https://www.kingsberry.com.au/sale/qld/townsville-district/nelly-bay/residential/house/4326720>



Ben Kingsberry
07 4772 2022
0438 792 652
ben.kingsberry@tsvharcourts.com.au



FIRST FLOOR PLAN



GROUND FLOOR PLAN