

Harcourts Kingsberry



7/2 Victoria Street TOWNSVILLE CITY QLD

2  **1**  **1** 

Perfectly positioned on Stanton Hill overlooking the CBD to the south and Cape Pallarenda and Palm Islands to the north this 127sqm unit really is in a top location. When it comes to lifestyle this property ticks all the boxes, being only a short walk to the city centre, the walking tracks of Castle Hill and The Strand. It is an older style unit with an internal living space bigger than many three-bedroom houses.

- Open plan living and dining
- Modern kitchen and bathroom
- Generous size bedrooms with built-in wardrobes
- Split system air-conditioning, fans and security screens
- Large rear deck with Castle Hill and city views
- Front balcony with ocean and island views
- Lock up garage

Price : \$ 250,000

View : <https://www.kingsberry.com.au/sale/qld/townsville-e-district/townsville-city/residential/apartment/4933589>

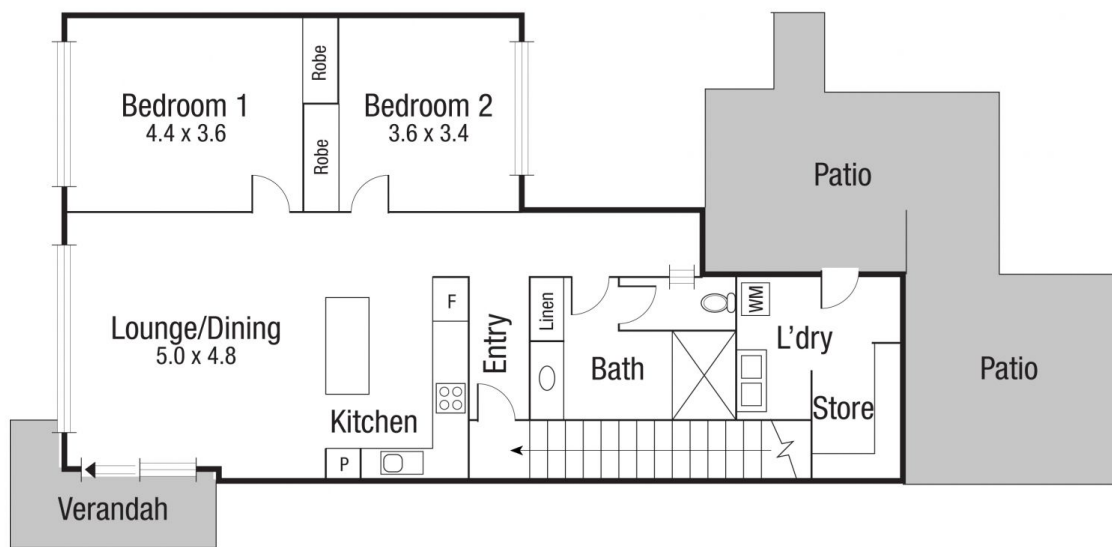


Malcolm Thomson

07 4772 2022

0400 545 664

malcolm.thomson@tsvharcourts.com.au



Scale in metres. Indicative only. Dimensions are approximate. All information contained herein is gathered from sources we believe to be reliable. However we cannot guarantee its accuracy and interested persons should rely on their own enquiries.

AREA	
INT	: 102.7 sq.m
EXT	: 39.6 sq.m
TOTAL	: 142.3 sq.m

7/2 Victoria