

Harcourts Kingsberry



2 Lerew Court ANNANDALE QLD

4 🛏 3 🚿 2 🚗

Quiet and unassuming from the street, once you enter the double front doors you will be greeted by multiple sitting areas, each with a slightly different feel depending on your mood. This home oozes class, with the owners opting for better quality finishes throughout.

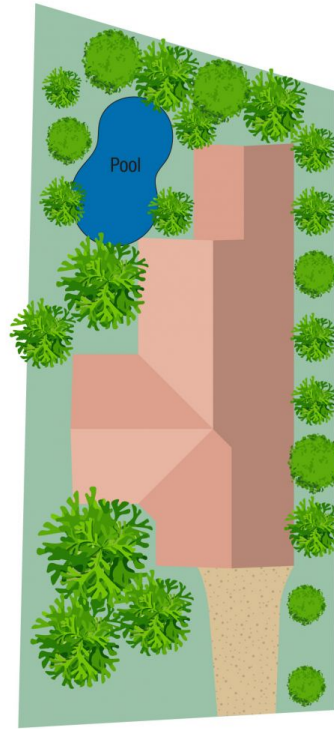
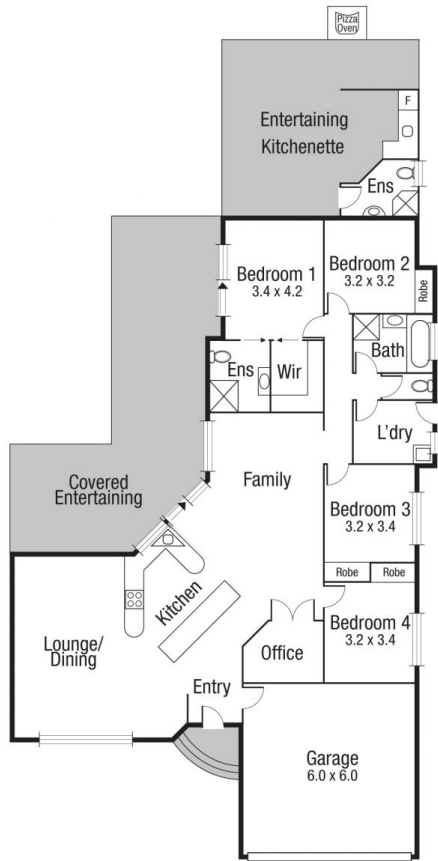
A central kitchen overlooks the outdoor entertaining areas and pool, making sure the kids are never out of sight while escaping the upcoming summer heat and ensuring the chef can remain a part of the family conversations. The bespoke kitchen design with heaps of storage and custom-made granite benchtop provides a talking point and includes a breakfast bar, servery window and combined display cabinets.

The deck is an entertainer's dream, with a pizza oven, TV and outdoor kitchen ready to whip up a storm while

Price : \$ 482,000
Building Size : 290 sqm
Land Size : 851 sqm
View : <https://www.kingsberry.com.au/sale/qld/ownsville-district/annandale/residential/house/5043434>



Ben Kingsberry
07 4772 2022
0438 792 652
ben.kingsberry@tsvharcourts.com.au



Scale in metres. Indicative only. Dimensions are approximate. All information contained herein is gathered from sources we believe to be reliable. However we cannot guarantee its accuracy and interested persons should rely on their own enquiries.

TOTAL : 289.8 sq.m

2 Lerew