

Harcourts Kingsberry



1610 Riverway Drive KELSO QLD

4 1 3

With Ross River and the stunning bush of Mt Stuart at your back gate, you won't be built out in this location. The current owners have run their landscaping business from this property and it really shows in the quality sculpturing of the beautiful gardens and the selection of tropical plants. The comprehensive irrigation system is connected to the bore to make this a 'very easy to care for' property. The house has been renovated and painted over the last few years.

- 938sqm backing onto river reserve and bushland
- Renovated kitchen with pantry, gas cooktop & electric f/f oven
- Open plan dining and family area and separate lounge
- Four good sized bedrooms with built-in wardrobes

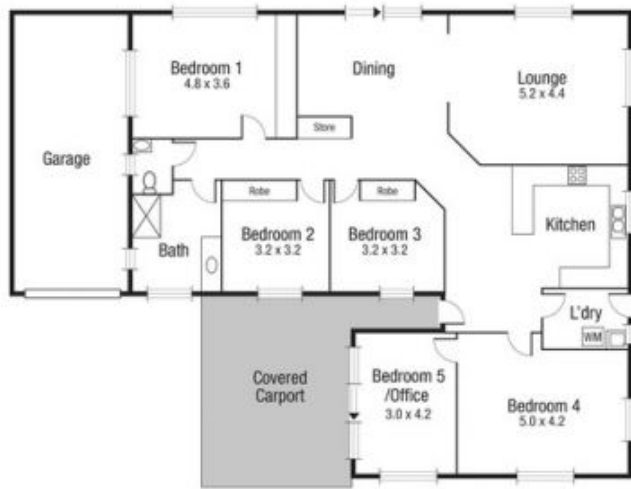
Price : \$ 299,000

View : <https://www.kingsberry.com.au/sale/qld/townsville-e-district/kelso/residential/house/5061483>



Malcolm Thomson
07 4772 2022
0400 545 664

malcolm.thomson@tsvharcourts.com.au



Scale in metres. Indicative only. Dimensions are approximate. All information contained herein is gathered from sources we believe to be reliable. However we cannot guarantee its accuracy and interested persons should rely on their own enquiries.

TOTAL AREA : 182.5 sq.m

1610 Riverway Drive, Kelso