

Harcourts Kingsberry



28 Doorey Street RAILWAY ESTATE QLD

3  2  2 

Conveniently located in one of Townsville's most sought after city fringing suburb, an impressive home ready for you to move into for Christmas.

Extra benefits include a spacious open plan interior that flows to an all weather alfresco family/entertainment area.

With loads of natural light and an up to date, neutral colour scheme throughout, this is the perfect opportunity for those with an interior decorator flair to personalize their own living space.

New to the market, available now and ready for its next owners.

- Three generously sized bedrooms all with built-ins
- Fully air-conditioned for year round comfort

Price : \$ 370,000

View : <https://www.kingsberry.com.au/sale/qld/townsville-e-district/railway-estate/residential/house/510736>
1

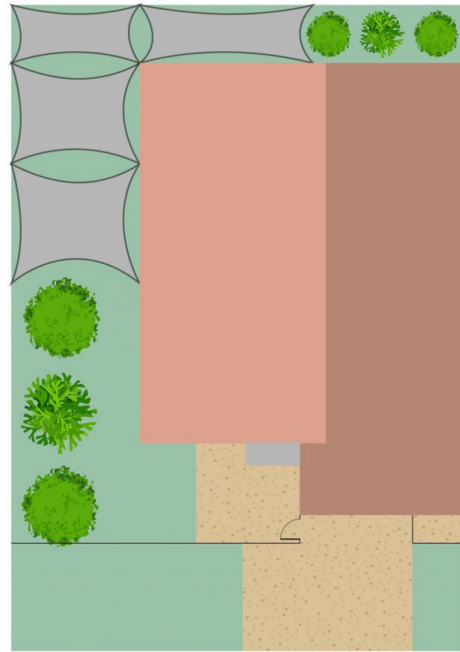
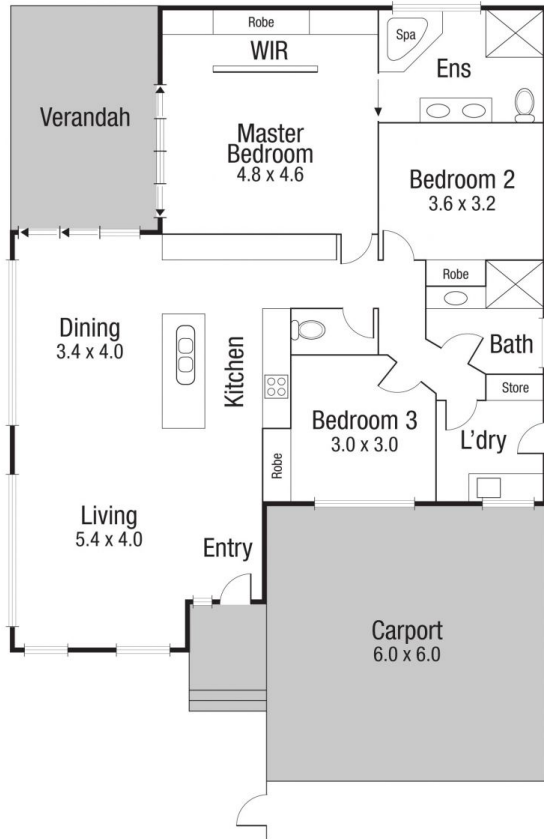


Stephanie Turnbull

07 4772 2022

0459 528 095

stephanie.turnbull@tsvharcourts.com.au



Scale in metres. Indicative only. Dimensions are approximate. All information contained herein is gathered from sources we believe to be reliable. However we cannot guarantee its accuracy and interested persons should rely on their own enquiries.

TOTAL AREA : 176.7 sq.m

28 Doorey