

Harcourts Kingsberry



1 Jonquil Crescent ANNANDALE QLD

4 3 3

This sprawling 290sqm single-level home has been designed from the ground up to impress. The design allows for everyone in the family to have their own spot, but also allows for the family to come together in the large living area. A commercial size kitchen is fully equipped with Miele appliances and heaps of storage space with breakfast bar and is finished off with stone benchtops.

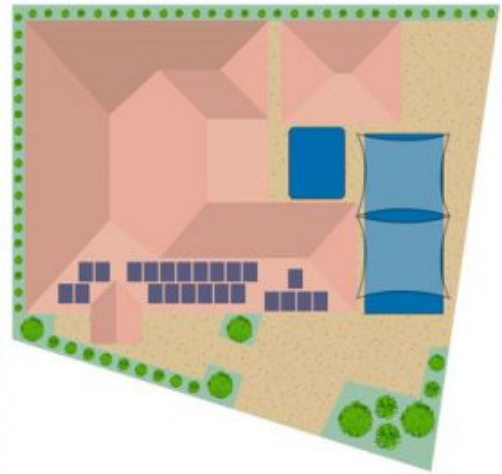
The master bedroom has an opulent ensuite and walk-in robe and even has external access to the outdoor entertaining area, while a second bedroom includes an ensuite and walk-in robe as well. The remaining two bedrooms are a generous size and are sure to have the kids fighting over the best room in the house.

Everything about this home is oversized and made to

View : <https://www.kingsberry.com.au/sale/qld/townsville-district/annandale/residential/house/5350256>



Ben Kingsberry
07 4772 2022
0438 792 652
ben.kingsberry@tsvharcourts.com.au



Scale in metres. Indicative only. Dimensions are approximate. All information contained herein is gathered from sources we believe to be reliable. However we cannot guarantee its accuracy and interested persons should rely on their own enquiries.

TOTAL AREA : 307.8 sq.m

1 Jonquil