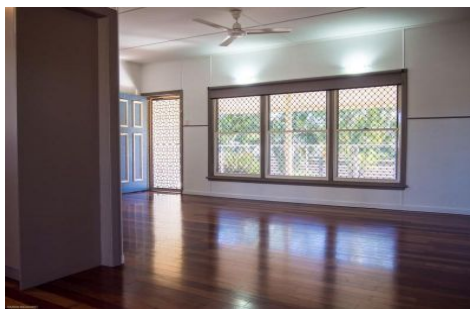
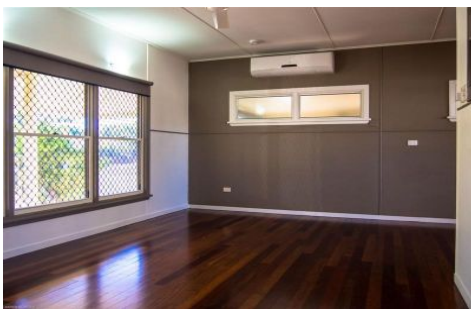


Harcourts Kingsberry



164 Palmerston Street GULLIVER QLD

3 1 2

This pocket of Gulliver with its 5-minute proximity to the CBD, is arguably the pick of the bunch.

Positioned on a 607 square metres block. This home offers so much to the young family, the perfect little entertainer!

- Just 5km south from the CBD
- Single lock-up garage with additional car accommodation out front
- Built-in robes to all bedrooms
- Modernized gas cooking and oven in kitchen
- Highly secure home
- Spa with pool safety certificate
- Garden shed
- Solar power to the roof
- Close to all amenities

Price : \$ 279,000

View : <https://www.kingsberry.com.au/sale/qld/townsville-e-district/gulliver/residential/house/5372079>



Stephanie Turnbull

0459 528 095

stephanie.turnbull@tsvharcourts.com.au