

Harcourts Kingsberry



24 Willmet Street TOWNSVILLE CITY QLD

3  1  1 

This stunning Queenslander has been meticulously renovated to combine modern luxuries with practicality, all while enjoying the impressive city and Castle Hill views.

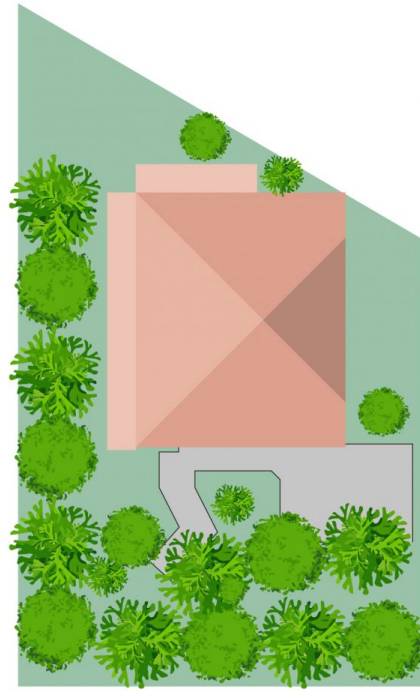
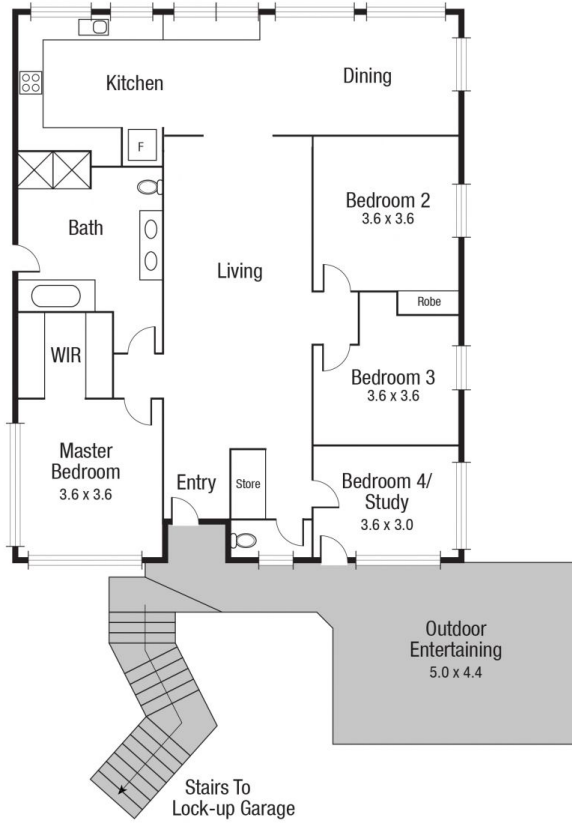
As you make your way down the stairs, you will be in awe of the views of Castle Hill and the city with Mount Stuart providing the perfect backdrop to this stunning outlook. Stepping inside, you will instantly feel at ease with plenty of light and a sense of space with 3.3m ceilings, big windows and a crisp colour scheme.

The spacious, modern kitchen is well positioned within the house to soak in the view of the city up to Castle Hill and has gloss white cabinetry, timber benches, induction cooktop and more. You'll feel as though you've stepped into a 5 star resort in the luxurious bathroom which boasts double shower heads, separate bath, double vanity and

Building Size : 185 sqm
Land Size : 454 sqm
View : <https://www.kingsberry.com.au/sale/qld/townsville-district/townsville-city/residential/house/5932302>



Ben Kingsberry
07 4772 2022
0438 792 652
ben.kingsberry@tsvharcourts.com.au



Scale in metres. Indicative only. Dimensions are approximate. All information contained herein is gathered from sources we believe to be reliable. However we cannot guarantee its accuracy and interested persons should rely on their own enquiries.

TOTAL : 185.3 sq.m

24 Willmet St, Townsville