

# Harcourts Kingsberry



## 69 Seventh Street RAILWAY ESTATE QLD

3 1 2

This stunning highset Queenslander has been tastefully updated to combine modern luxuries without losing the charm of yesteryear.

Stepping inside, you will instantly feel at ease with plenty of light and a sense of space with high ceilings, big windows and a crisp colour scheme. A central hallway keeps the three generous bedrooms separate from the living areas. The neat kitchen is spacious, with the open plan design ensuring the chef can remain part of the family conversations at dinner time.

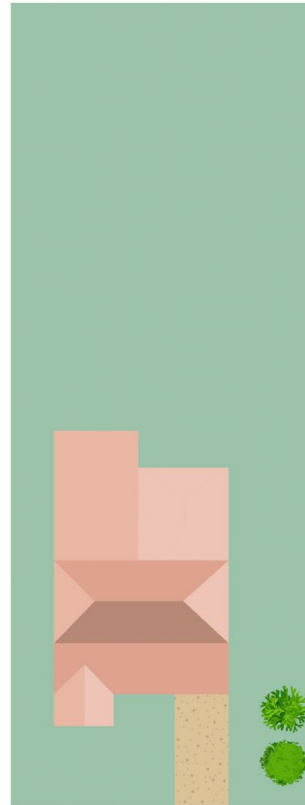
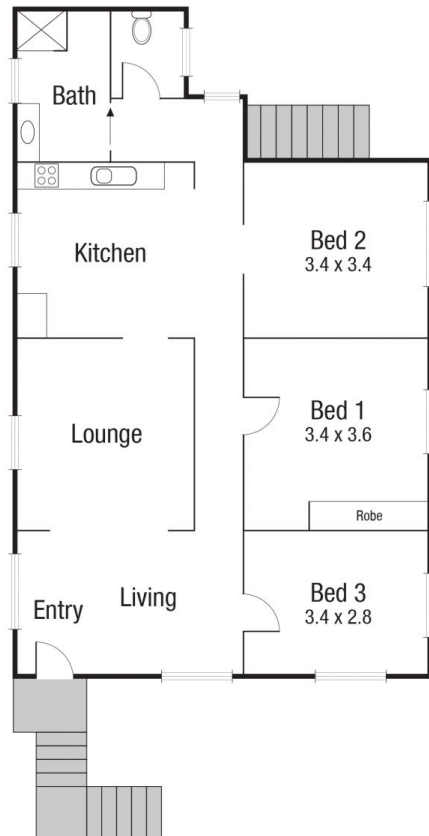
The house has been raised and a solid concrete slab poured to underneath, with multiple steel beams used removing the need for so many posts. The options for enclosing underneath are endless, but the hardest part is done.

The potential continues with a fully fenced 607sqm block with easy access to the back yard and plenty of room for a

**Price** : \$ 337,000  
**Land Size** : 607 sqm  
**View** : <https://www.kingsberry.com.au/sale/qld/townsville-district/railway-estate/residential/house/5988141>



Ben Kingsberry  
07 4772 2022  
0438 792 652  
[ben.kingsberry@tsvharcourts.com.au](mailto:ben.kingsberry@tsvharcourts.com.au)



Scale in metres. Indicative only. Dimensions are approximate. All information contained herein is gathered from sources we believe to be reliable. However we cannot guarantee its accuracy and interested persons should rely on their own enquiries.

TOTAL AREA : 87.3 sq.m

**69 Seventh Street, Railway Estate**