

Harcourts Kingsberry



6 Platypus Street BUSHLAND BEACH QLD

4 2 2

Don't miss your opportunity to join this thriving community nestled away on an elevated site with only local traffic. This home in Bushland Beach offers a well-connected lifestyle a short distance from the Bushland Beach Tavern and beachfront.

Impressive from the curb, the raised portico draws your attention whilst the rock fringed garden softens the look and melds the home into the landscape.

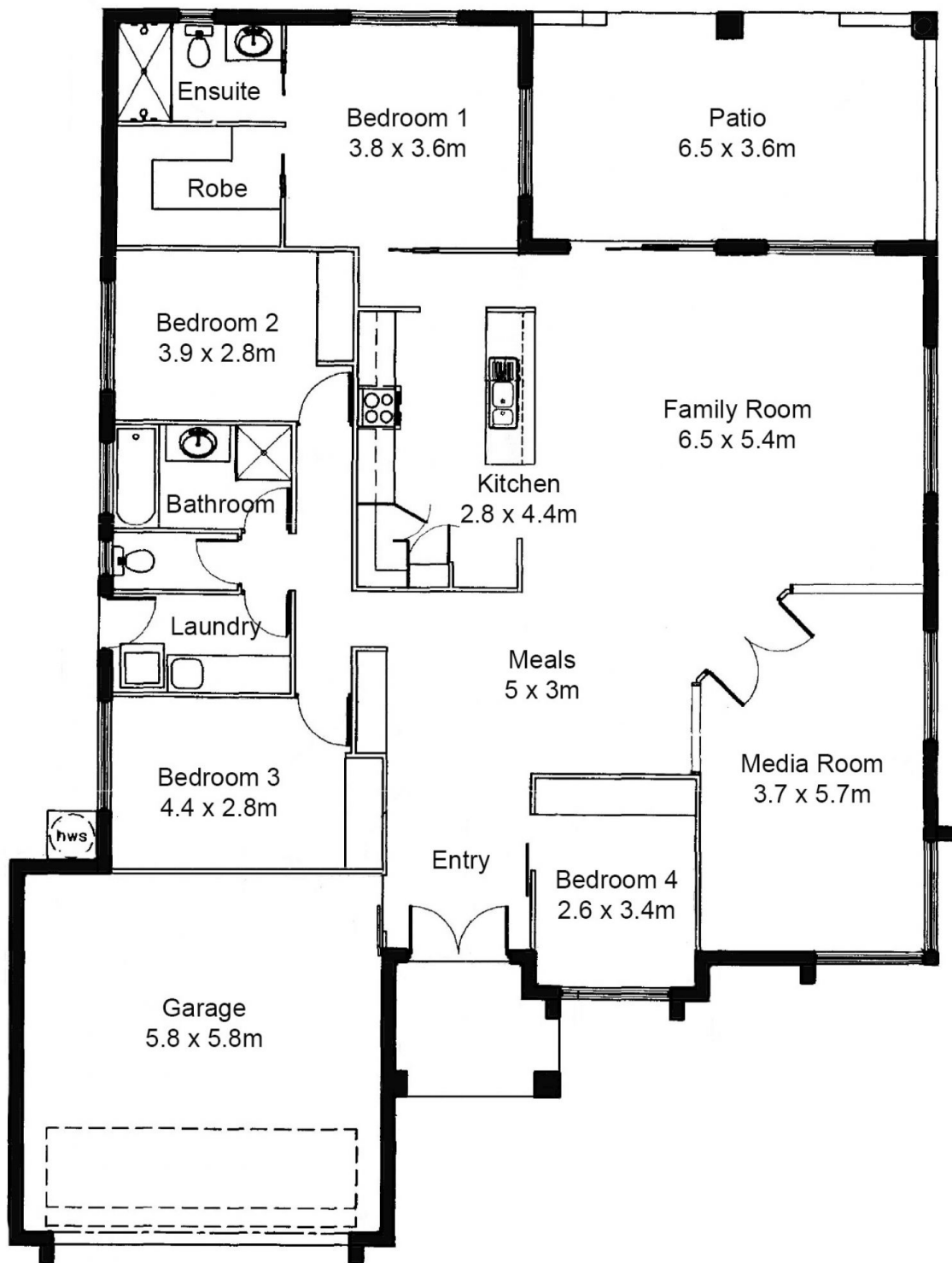
Inside the home is well proportioned and spreads out around the central tiled living area. Eye catching black stone benchtops are complemented by a profusion of cupboards and drawers. The room feels grand with elevated ceilings and glass doors which spills out onto the tiled patio beyond.

Double doors from the living area open into the media room

Price : \$ 380,000
Land Size : 849 sqm
View : <https://www.kingsberry.com.au/sale/qld/townsville-district/bushland-beach/residential/home/6152017>



Michael Martini
07 4772 2022
0418 731 677
michael.martini@tsvharcourts.com.au



Living	180m ²
Garage	37m ²
Patio	24m ²
Total	241m²

6 Platypus Street, Bushland Beach