

Harcourts Kingsberry



1/7 Tuffley Street WEST END QLD

2  1  1 

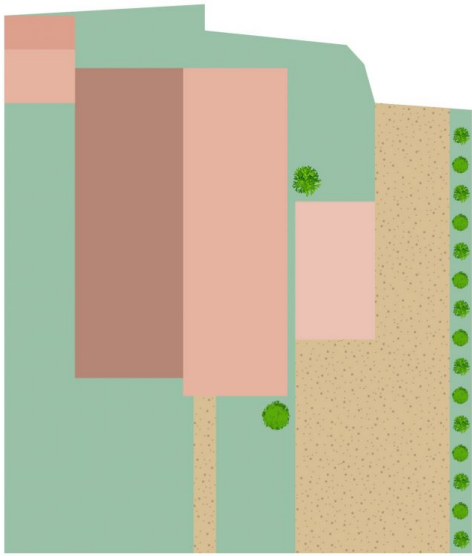
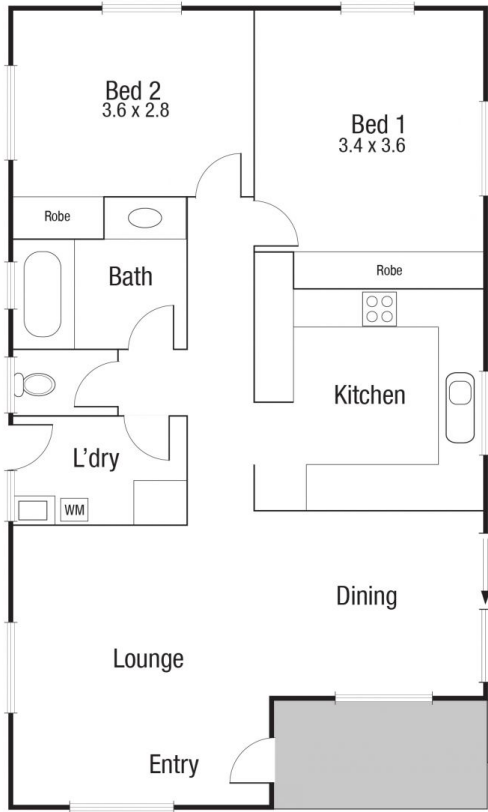
This 2 bedroom house with carport and garden shed is on a 345sqm group title block in the cul de sac end of Tuffley Street. Freshly painted inside and out, it is only minutes to the CBD, The Strand, parks, the Garbutt, and Castletown Shopping Centres. There are no body corporate charges.

Price : \$ 239,000
Land Size : 345 sqm
View : <https://www.kingsberry.com.au/sale/qld/townsville-district/west-end/residential/house/6247076>

- 2 air-conditioned bedrooms with built-in wardrobes
- Open plan lounge/dining area
- Modern kitchen with pantry & electric stove
- Air-conditioned and security screened
- Fully fenced yard with double gate entry - ideal for pets
- Plenty of open space across the cul de sac
- Views of Castle Hill



Malcolm Thomson
07 4772 2022
0400 545 664
malcolm.thomson@tsvharcourts.com.au



Scale in metres. Indicative only. Dimensions are approximate. All information contained herein is gathered from sources we believe to be reliable. However we cannot guarantee its accuracy and interested persons should rely on their own enquiries.

TOTAL AREA : 81.2 sq.m

1/7 Tuffley St, Malcolm