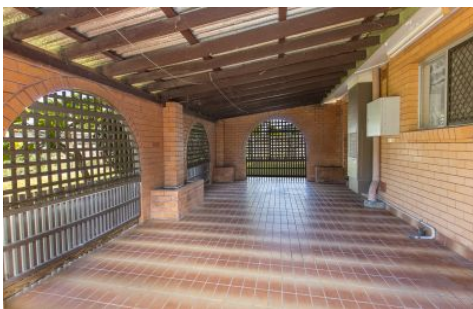


Harcourts Kingsberry



16 Marsh Street HEATLEY QLD

4 2 1

This lovely home positioned in a central location in Heatley, perfect for first home buyers or for the astute investor.

Features

- *Three generous sized bedrooms all with air conditioning
- *Positioned on a 607m2 allotment, which is also fully fenced
- *Garden shed, to keep all those tools housed
- *Secure outdoor entertaining ideal for all year alfresco dining
- *Two large bathrooms, one with a bathtub
- *Two toilets
- *An extra large room which could easily be a fourth bedroom or additional living area
- *All carpeted areas are in very good condition
- *Separate living and dining
- *Secure single lock up car accommodation

Price : \$ 239,000

View : <https://www.kingsberry.com.au/sale/qld/townsville-e-district/heatley/residential/house/6263633>



Stephanie Turnbull

07 4772 2022

0459 528 095

stephanie.turnbull@tsvharcourts.com.au