

# Harcourts Kingsberry



## 62 Seventh Street RAILWAY ESTATE QLD

5 🛏 2 🚿 2 🚗

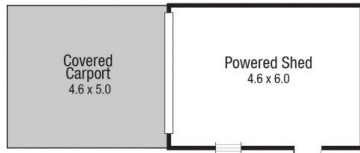
Family size queenslander homes of this calibre are rare, especially just minutes from the city! Backing onto reserve land providing peace and tranquillity with lovely Mount Stuart views in the distance, this gem won't last long in the busy Townsville market.

**View** : <https://www.kingsberry.com.au/sale/qld/townsville-district/railway-estate/residential/house/6366114>

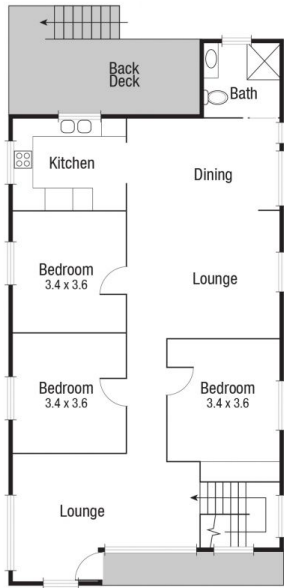
Prepare to be impressed the moment you enter this abode. With living split over two levels, this home is the epitome of relaxed and spacious family living. The lower level offers an extra large open plan family living area, family bathroom, study space and two bedrooms ideal for teenagers that want some privacy and space. Connected by internal stairs, the upper level of the home offers many original features including polished timber floorboards, coloured glass casement windows, ornate fretwork, and a stunning original light fitting in the central hall that leads to the living spaces. An open plan living and dining area is also on this



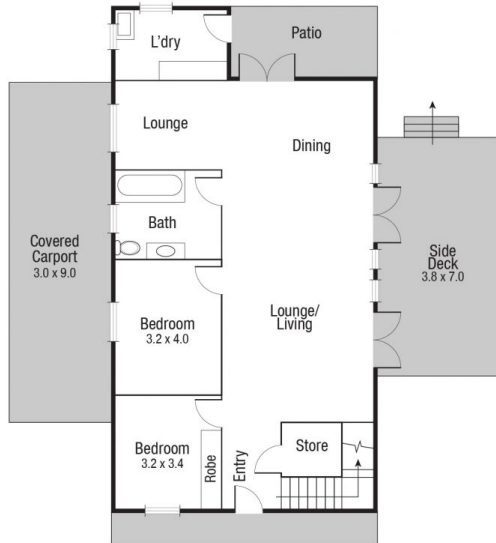
**Ben Kingsberry**  
07 4772 2022  
0438 792 652  
[ben.kingsberry@tsvharcourts.com.au](mailto:ben.kingsberry@tsvharcourts.com.au)



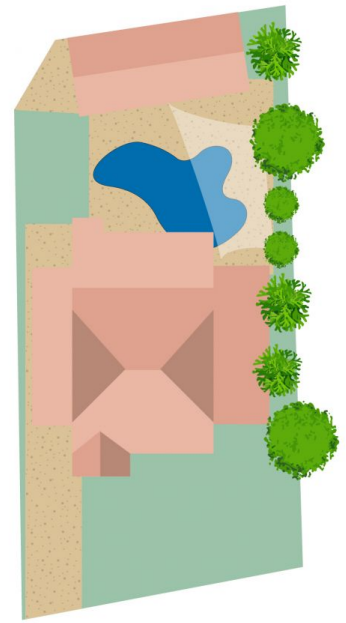
(Not In Position)



First floor



Ground floor



TOTAL AREA : 282.4 sq.m

Scale in metres. Indicative only. Dimensions are approximate. All information contained herein is gathered from sources we believe to be reliable. However we cannot guarantee its accuracy and interested persons should rely on their own enquiries.

## 62 Seventh St, Railway Estate