

Harcourts Kingsberry



4/20 Cameron Street RAILWAY ESTATE QLD

2 1 1

This large, 151sqm, renovated townhouse is in a small, well-maintained complex on the banks of the Ross River, near the end of a secluded cul de sac. Directly across the road is a community park running along the water's edge, ideal for exercising pets, or, sitting in quiet contemplation, absorbing the flow of the water and the sounds of the native wildlife.

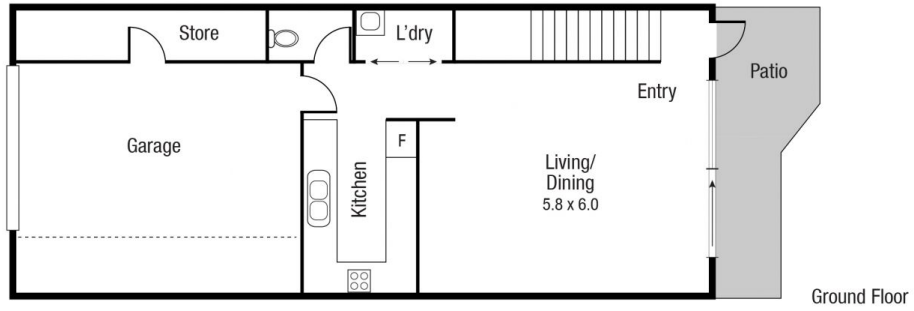
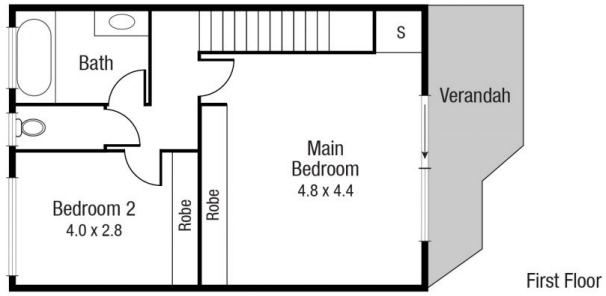
The unit is fully air-conditioned with split systems and has polished timber stairs linking the upper and lower levels.

- New kitchen and open plan living area
- 2 spacious air-conditioned bedrooms
- Built-in wardrobes with mirrored doors
- Main bedroom has its own deck with water views
- Plentiful cupboard space and storage
- Separate toilets upstairs and downstairs
- Security screens and doors

Price : \$ 210,000
Building Size : 151 sqm
View : <https://www.kingsberry.com.au/sale/qld/townsville-district/railway-estate/residential/townhouse/6405860>



Malcolm Thomson
07 4772 2022
0400 545 664
malcolm.thomson@tsvharcourts.com.au



Scale in metres. Indicative only. Dimensions are approximate. All information contained herein is gathered from sources we believe to be reliable. However we cannot guarantee its accuracy and interested persons should rely on their own enquiries.

TOTAL AREA : 155.3 sq.m

4/20 Cameron