

# Harcourts Kingsberry



## 9 Dragon Flower Avenue MOUNT LOW QLD

4 2 2

Whether you are looking for a home or investment this is a must-see.

This property has plenty on offer and must be inspected to be fully appreciated. As soon as you walk in, you will be wowed by the sense of light and space created by the raked high ceilings to the open plan kitchen, dining and living spaces. The neat kitchen is the hub of the home with an abundance of bench and cupboard space and quality appliances. The four spacious bedrooms all have built in storage and the main boasts a well-appointed ensuite and walk in robe. The main bathroom is fitted with a shower over bath and cleverly positioned for convenience and privacy while the air-conditioning throughout will keep you cool regardless of the time of year.

The back patio to the rear of the house is the perfect place

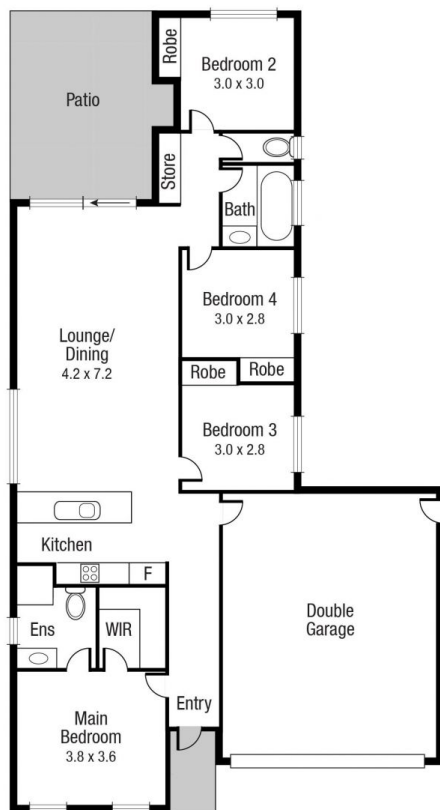
**Price** : \$ 315,000  
**Land Size** : 450 sqm  
**View** : <https://www.kingsberry.com.au/sale/qld/townsville-district/mount-low/residential/house/6407510>



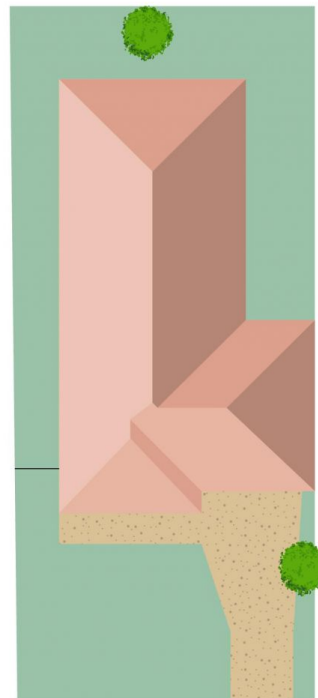
Brendon Marty  
07 4772 2022  
0411 820 178  
[brendon.marty@tsvharcourts.com.au](mailto:brendon.marty@tsvharcourts.com.au)

<https://www.kingsberry.com.au>

210 Charters Towers Road Hermit Park QLD  
07 47 722 022



Scale in metres. Indicative only. Dimensions are approximate. All information contained herein is gathered from sources we believe to be reliable. However we cannot guarantee its accuracy and interested persons should rely on their own enquiries.



TOTAL AREA : 166.8 sq.m

**Harcourts**  
KINGSBERRY

9 Dragon Flower Avenue, Mount Low