

Harcourts Kingsberry



3 Cascade Court MOUNT LOUISA QLD

4 2 2

Tucked away in a nice quiet court in central Mount Louisa, this low-set block home has lived a good life and is now on the lookout for a new owner to give it a fresh lease on life. This is your opportunity to put your own personality into this property and reap the rewards in this rising market.

The property is sturdy in design and features four spacious bedrooms with built in robes and ceiling fans. The master bedroom features air-conditioning and an ensuite. There is also a spacious kitchen adjacent to the dining area and tucked nicely to the front of the property is an airconditioned formal lounge area.

The outside is designed with North Queensland living in mind and features a large concreted alfresco area along with a large in ground pool perfect for those hot summer days. The property also features one covered car

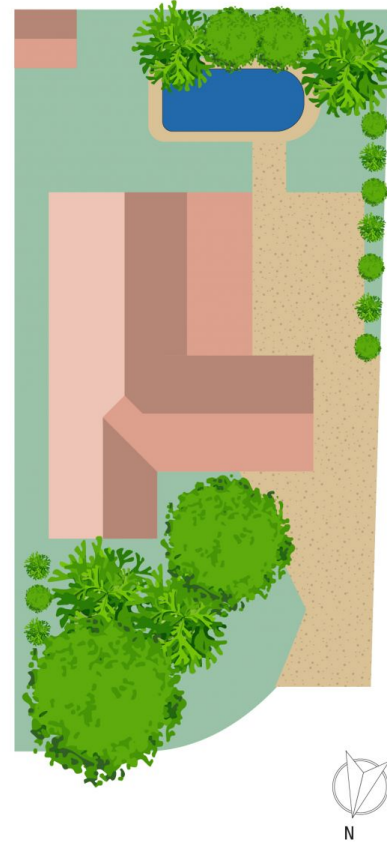
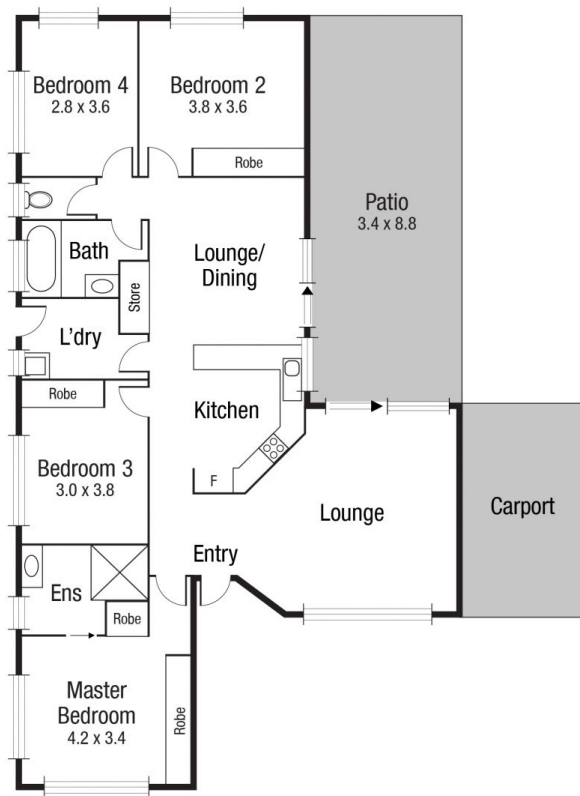
Price : \$ 295,000
Building Size : 145 sqm
Land Size : 687 sqm
View : <https://www.kingsberry.com.au/sale/qld/townsville-district/mount-louisa/residential/house/6456398>



Adrian Raiteri
07 4772 2022
0427 673 612
adrian.raiteri@tsvharcourts.com.au

<https://www.kingsberry.com.au>

210 Charters Towers Road Hermit Park QLD
07 47 722 022



Scale in metres. Indicative only. Dimensions are approximate. All information contained herein is gathered from sources we believe to be reliable. However we cannot guarantee its accuracy and interested persons should rely on their own enquiries.

TOTAL AREA : 165.8 sq.m

3 Cascade Court, Mount Louisa