

# Harcourts Kingsberry



## 4 Rodeo Drive MOUNT LOUISA QLD

3 2 2

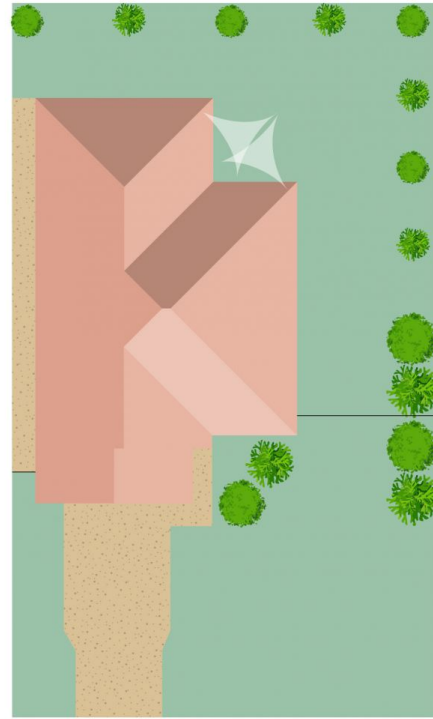
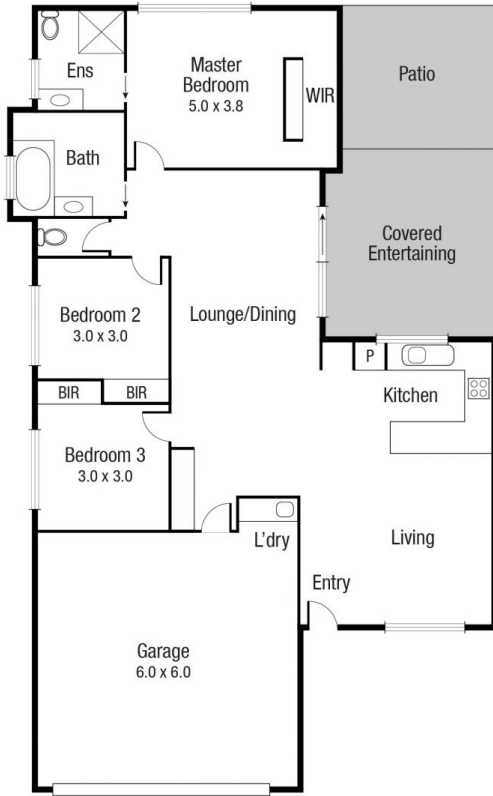
Situated on a 600sqm block, this family-friendly, low maintenance home is only 9 years old and is less than 10 minutes to the Townsville Airport, shopping centres, and other attractions. Strategically placed close to a range of schools and one of Townsville's largest shopping centres at The Domain, it has a new kitchen and has just been freshly painted.

- Flow through open plan living and dining area
- New kitchen with soft close drawers
- Ceramic hotplates, rangehood and electric fan-forced oven
- Spacious bedrooms with built-in wardrobes
- Main bedroom with ensuite and walk-in wardrobe
- Split system air-conditioning and security screens
- Outside entertaining patio with timber deck
- Pet friendly, fully fenced, landscaped yard

**Price** : \$ 380,000  
**Land Size** : 600 sqm  
**View** : <https://www.kingsberry.com.au/sale/qld/townsville-district/mount-louisa/residential/house/6555793>



Malcolm Thomson  
07 4772 2022  
0400 545 664  
[malcolm.thomson@tsvharcourts.com.au](mailto:malcolm.thomson@tsvharcourts.com.au)



Scale in metres. Indicative only. Dimensions are approximate. All information contained herein is gathered from sources we believe to be reliable. However we cannot guarantee its accuracy and interested persons should rely on their own enquiries.

TOTAL AREA : 182.4 sq.m

## 4 Rodeo