

Harcourts Kingsberry



21 Eucalyptus Avenue ANNANDALE QLD

4  **2**  **2** 

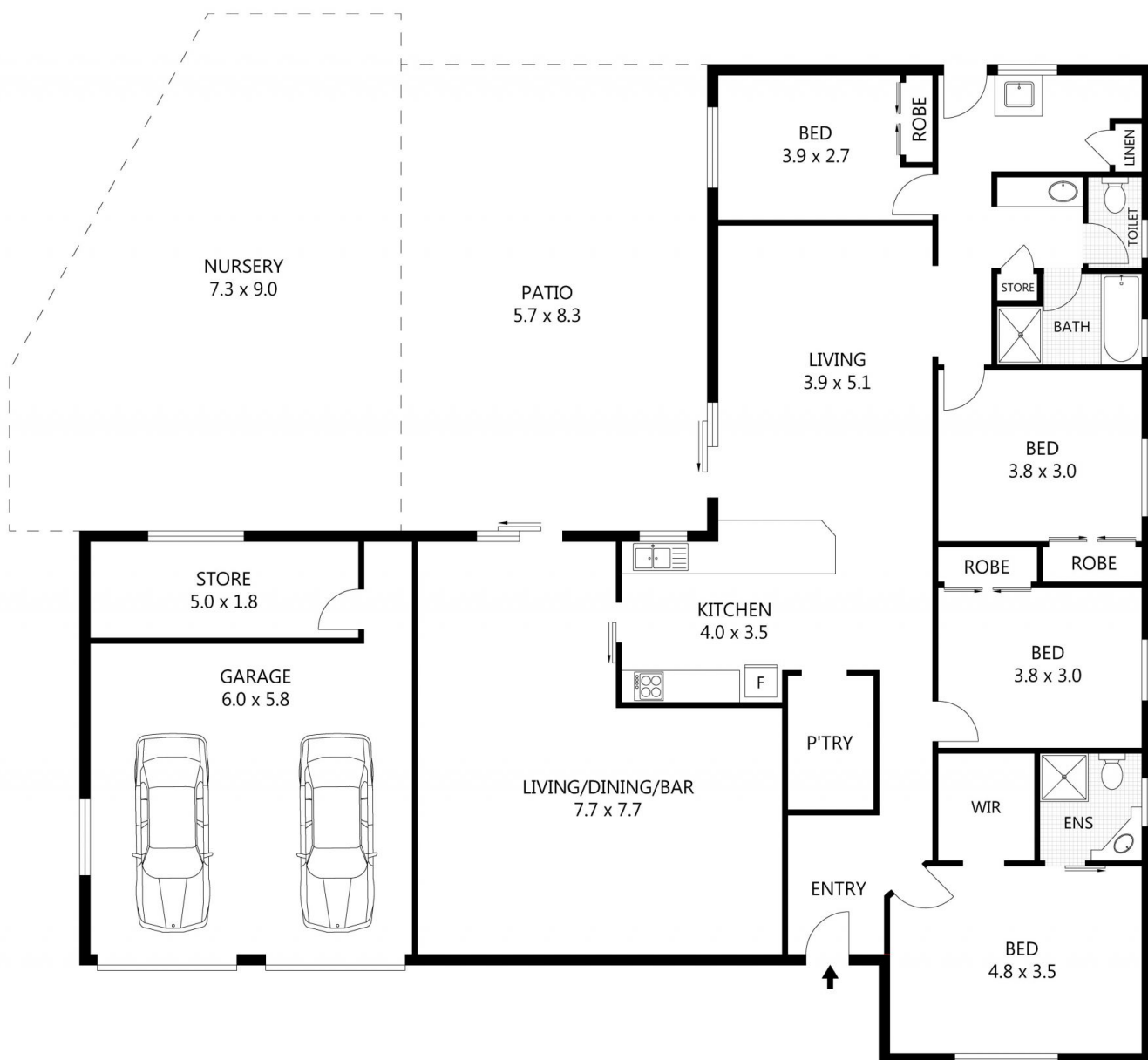
You would be hard pressed to find a quality home in this price range in such a great location in the sought-after suburb of Annandale. Loved and cared for by the same owners for 27 years you will know that you can move straight in without doing a thing. This property was not affected by the recent Townsville flood.

Set on a large 879m² block this roomy home offers four bedrooms, 3 with built-in robes whilst the master bedroom has an ensuite and walk-in robe. The main bathroom has a plunge bath, shower, separate powder room and linen cupboard. There are two separate living areas, well equipped kitchen, gas cooktop, electric oven, extra large fridge space, spacious walk-in pantry, dishwasher, stone benchtops and breakfast bar. The family room is of good size and opens out to a large tiled patio area that overlooks a lovely fernery and spacious backyard. The double lock-up

Price : \$ 449,000
Land Size : 879 sqm
View : <https://www.kingsberry.com.au/sale/qld/townsville-district/annandale/residential/house/6569572>



Mario Torrisi
07 4772 2022
0407 636 259
mario.torrisi@tsvharcourts.com.au



0 1 2 3 4 5

Scale in metres. Indicative only. Dimensions are approximate. All information contained herein is gathered from sources we believe to be reliable. However we cannot guarantee its accuracy and interested parties should rely on their own enquiries.

TOTAL UNDER ROOF - 333m²
 RESIDENCE - 181m²
 PATIO - 48m²
 GARAGE/STORE - 46m²
 NURSERY - 58m²

21 Eucalyptus Avenue, Annandale