

Harcourts Kingsberry



3 Corella Crescent MOUNT LOUISA QLD

3 1 2

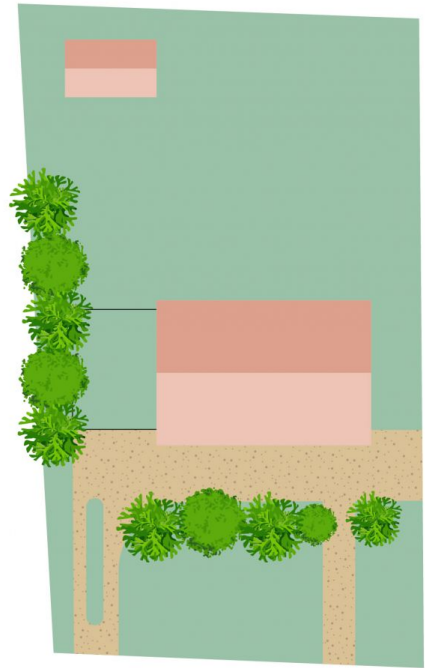
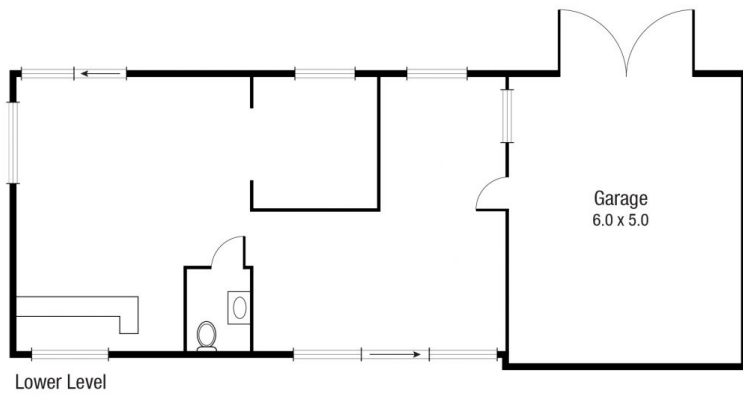
This beautiful highset home in sought after Mount Louisa has been fully refreshed internally making it the perfect home to simply move the furniture straight in and start living your best life.

Upstairs offers three bedrooms complete with split system air-conditioning, ceiling fans and built-in robes. The kitchen has been refreshed and features plenty of bench and cupboard space. The open plan living, and dining space is light and airy and opens onto the large timber deck, perfect for relaxing in the afternoon with a chilled beverage with views back to Mount Stuart. Upstairs there is also a refreshed bathroom featuring a shower/tub combo and a separate toilet. The inside has been freshly painted and the flooring has been updated adding extra appeal to the property.

Price : \$ 312,000
Land Size : 600 sqm
View : <https://www.kingsberry.com.au/sale/qld/townsville-district/mount-louisa/residential/house/6576903>



Adrian Raiteri
07 4772 2022
0427 673 612
adrian.raiteri@tsvharcourts.com.au



Scale in metres. Indicative only. Dimensions are approximate. All information contained herein is gathered from sources we believe to be reliable. However we cannot guarantee its accuracy and interested persons should rely on their own enquiries.

TOTAL AREA : 203.4 sq.m

3 Corella Court, Mount louisa