

Harcourts Kingsberry



2/23 Echlin Street WEST END QLD

2 1 1

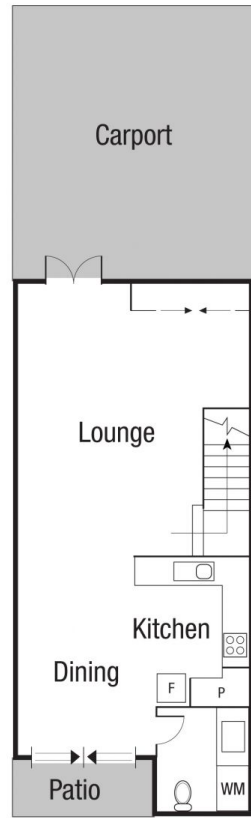
Once the home of Benji, this large [160sqm], modern townhouse in a gated community close to coffee shops, the CBD, The Strand, the walking tracks of Castle Hill, and Castletown Shopping Centre makes for great living. It has new carpet and has been freshly painted. Upstairs it has a big deck, two large bedrooms, a study, and a 2-way bathroom. Downstairs is a second toilet, laundry, indoor patio for Benji, kitchen, and spacious living area.

- 2 air-conditioned bedrooms with built-in wardrobes
- Spacious open plan lounge / dining area
- Modern kitchen with pantry & induction cooktop
- Fully air-conditioned
- Big entertaining deck
- Extra toilet downstairs
- Lock up garage with storage space

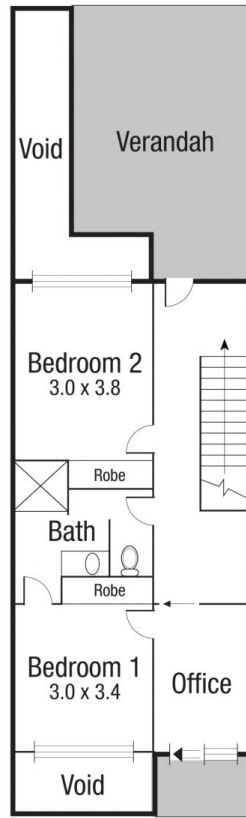
Price : \$ 275,000
Building Size : 160 sqm
View : <https://www.kingsberry.com.au/sale/qld/townsville-district/west-end/residential/townhouse/6592305>



Malcolm Thomson
07 4772 2022
0400 545 664
malcolm.thomson@tsvharcourts.com.au



Ground Floor



First Floor

Scale in metres. Indicative only. Dimensions are approximate. All information contained herein is gathered from sources we believe to be reliable. However we cannot guarantee its accuracy and interested persons should rely on their own enquiries.

TOTAL : 132.0 sq.m

2/23-25 Echlin