

# Harcourts Kingsberry



## 4 Lerew Court ANNANDALE QLD

4 2 2

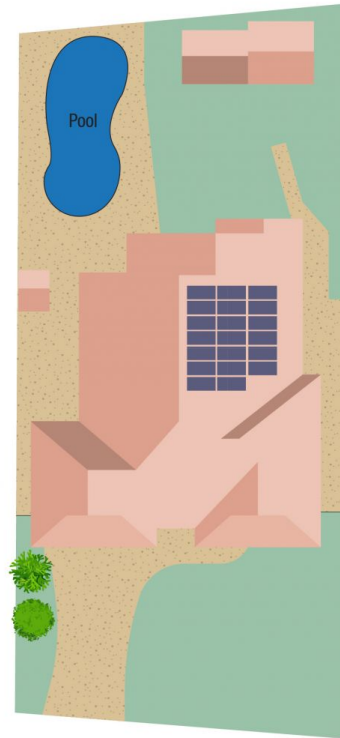
This large 4 bedroom home is located in a quiet court in one of Townsville's most family-friendly suburbs, just minutes from the hospital, university and shopping centres. A smart layout with multiple living areas ensures all the family can have their own space, but at dinner time the high ceilings and LED downlights give an impressive feel to the dining area. The large kitchen has been well designed, with a doorway directly from the garage to ensure bringing the groceries in is a breeze and the extra-large benchtop ensures there's plenty of space and has the perfect breakfast bar.

The huge concreted outdoor entertaining areas and a covered and powered BBQ hut ensure you'll be the envy of your friends when entertaining. The extra deep pool means your summers will be spent enjoying what you've worked hard for, while wide concrete paths around the house show

**Building Size** : 264 sqm  
**Land Size** : 809 sqm  
**View** : <https://www.kingsberry.com.au/sale/qld/townsville-district/annandale/residential/house/6593039>



Ben Kingsberry  
07 4772 2022  
0438 792 652  
[ben.kingsberry@tsvharcourts.com.au](mailto:ben.kingsberry@tsvharcourts.com.au)



Scale in metres. Indicative only. Dimensions are approximate. All information contained herein is gathered from sources we believe to be reliable. However we cannot guarantee its accuracy and interested persons should rely on their own enquiries.

**TOTAL AREA : 264.9 sq.m**

**4 Lerew Court, Annandale**