

# Harcourts Kingsberry



## 4 Beatrice Street Aitkenvale QLD

3 1 1

Situated a stone's throw from Townsville's largest shopping centre Stockland's this central location is hard to beat with an array of schools and shops on your doorstep. Perched on a 1012 sqm block with the home positioned at the front there is GIGIANTIC backyard to create a tropical oasis or even build a relatives apartment.

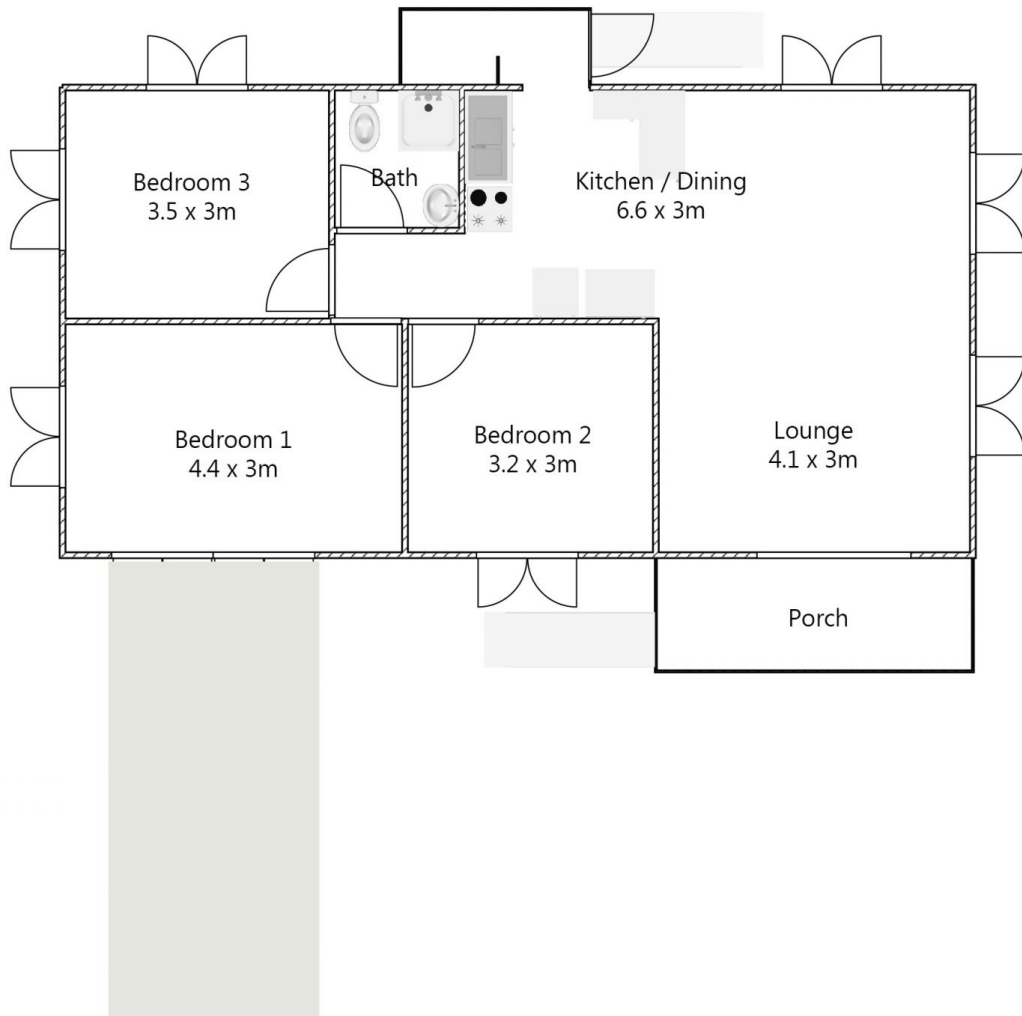
**Price** : \$ 290,000  
**Land Size** : 1012 sqm  
**View** : <https://www.kingsberry.com.au/sale/qld/townsville-district/aitkenvale/residential/house/6672425>

A practical floor plan, it offers easy living and an enjoyable lifestyle. Enter into the L shaped living/dining and kitchen with the three bedrooms and bathroom down off the hallway. The modest kitchen and bathroom are functional and are a clever use of the space available.



Downstairs is lockable with a concrete floor and offers the laundry, car accommodation and heaps of storage space. The roof was replaced in 2019.

Michael Martini  
07 4772 2022  
0418 731 677  
[michael.martini@tsvharcourts.com.au](mailto:michael.martini@tsvharcourts.com.au)



## 4 Beatrice Street, Aitkenvale

Indicative Only. Dimensions are approximate. All information contained herein is gathered from sources we believe to be reliable. However we cannot guarantee its accuracy and interested persons should rely on their own enquiries.