

Harcourts Kingsberry



27 Garrison Court Mount Louisa QLD

4 2 2

Located in a quiet pocket of Mount Louisa, this well-maintained family home is now available with nothing more to do than to move in and enjoy the many great features that this property and location has to offer.

The house sits proudly on a maintained 628 sqm corner block with genuine side access making a shed the perfect addition. The modern home offers four bedrooms with split system air-conditioning and built-in robes, two bathrooms (main bathroom with separate tub), double car accommodation, open plan living and dining with a spacious kitchen overlooking the outdoor entertaining area.

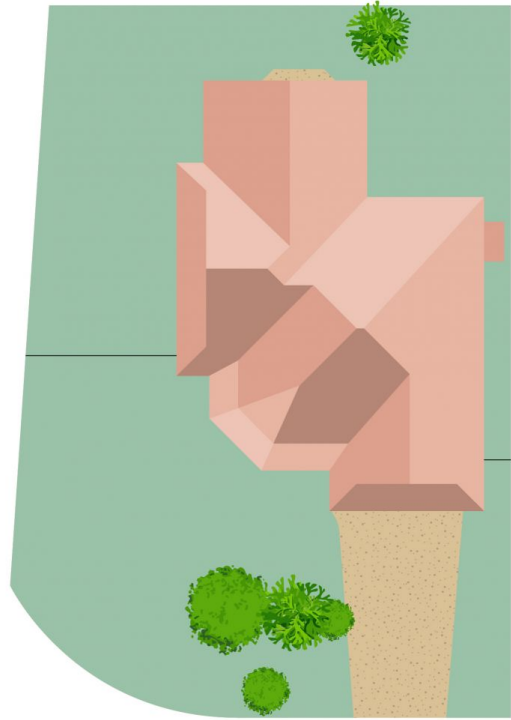
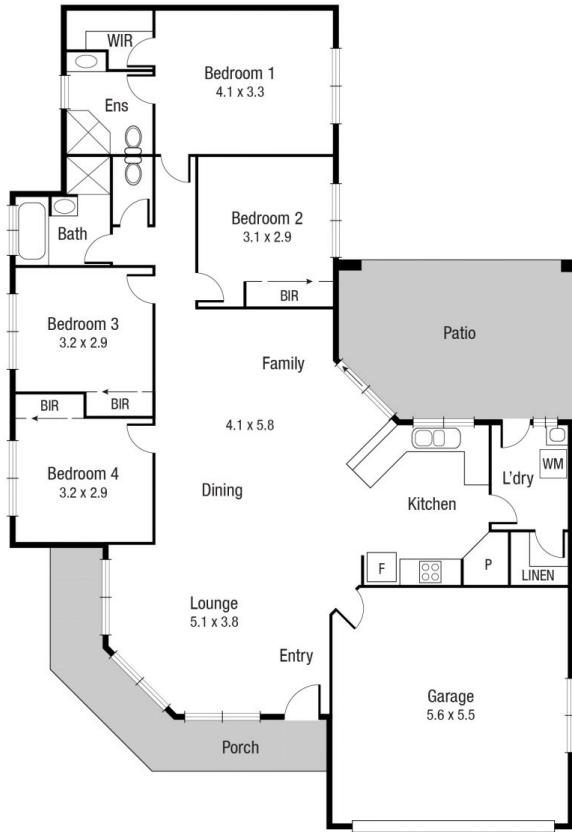
Property:

- Four bedrooms complete with built in robes and split system air-conditioning
- Spacious kitchen with stone bench tops and plenty of

Price : \$ 400,000
Land Size : 628 sqm
View : <https://www.kingsberry.com.au/sale/qld/townsville-district/mount-louisa/residential/house/6672491>



Adrian Raiteri
07 4772 2022
0427 673 612
adrian.raiteri@tsvharcourts.com.au



Scale in metres. Indicative only. Dimensions are approximate. All information contained herein is gathered from sources we believe to be reliable. However we cannot guarantee its accuracy and interested persons should rely on their own enquiries.

TOTAL AREA : 205.3 sq.m

27 Garrison Court, Mount Louisa