

Harcourts Kingsberry



12 San Vito Crescent Rasmussen QLD

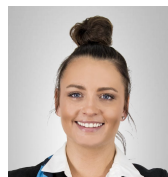
3 1 2

Located in Rasmussen and situated down the end of a No through road estate adjacent the famous Riverway precinct - close to schools, shops, transport and just a few minutes drive to direct ring road access! You can settle in and live the simple life here, bring the boat, the camper, and enjoy your weekends just a minute away cruising the river with your friends and family!

This is a timeless and reliable brick home set on a 672m2 block and will suit a variety of buyers within a reasonable budget. She might be simple, but she is solid and sturdy and can provide the perfect opportunity for those wanting to get into the market without a large deposit, downsizers, investors and renovators too!

Low maintenance and recently vacant means you just have to move in!

Price : \$ 215,000
Land Size : 672 sqm
View : <https://www.kingsberry.com.au/sale/qld/townsville-district/rasmussen/residential/house/6672495>



Sinead Ormes

0457 255 083

sinead.ormes@tsvharcourts.com.au