

Harcourts Kingsberry



4/120-122 Robertson Street Railway Estate QLD

3 2 2

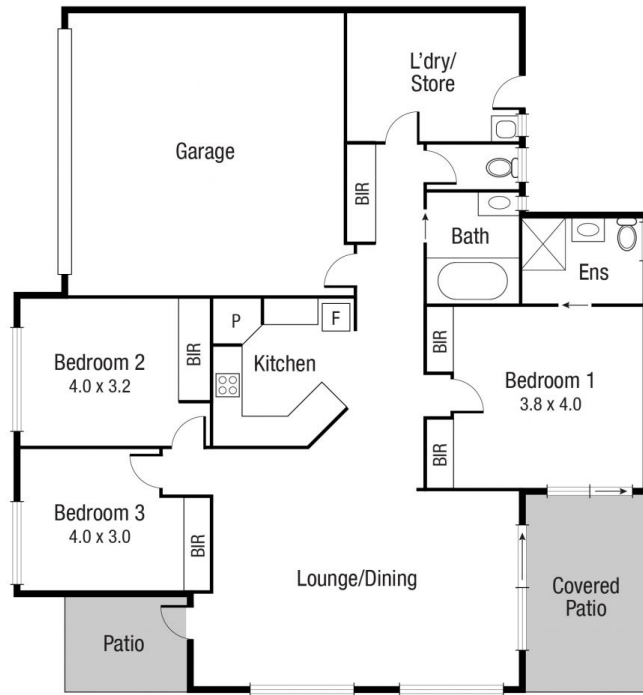
Only 5 minutes to the CBD and The Strand, this large, 167sqm, lowset villa in a small, well-maintained complex of four is at a quiet end of Robertson Street. Directly across the road is The Townsville Community Garden and open space, ideal for exercising pets, or going for a quiet stroll. The unit is fully air-conditioned with a patio and private yard space. Currently, it has a long-term tenant with a lease in place until April 2022.

Price : \$ 285,000
Building Size : 36 sqm
View : <https://www.kingsberry.com.au/sale/qld/townsville-district/railway-estate/residential/house/6672496>

Very functional kitchen with pantry and wall oven
Open plan living and dining area
3 spacious bedrooms with built-in wardrobes
Main bedroom with ensuite
Large laundry, plentiful cupboard and storage space
Security screens and doors
Lock up double garage with internal access



Malcolm Thomson
07 4772 2022
0400 545 664
malcolm.thomson@tsvharcourts.com.au



Scale in metres. Indicative only. Dimensions are approximate. All information contained herein is gathered from sources we believe to be reliable. However we cannot guarantee its accuracy and interested persons should rely on their own enquiries.

TOTAL AREA : 166.7 sq.m

4/120 Robertson