

Harcourts Kingsberry



184 Mount Low Parkway Mount Low QLD

5 2 4

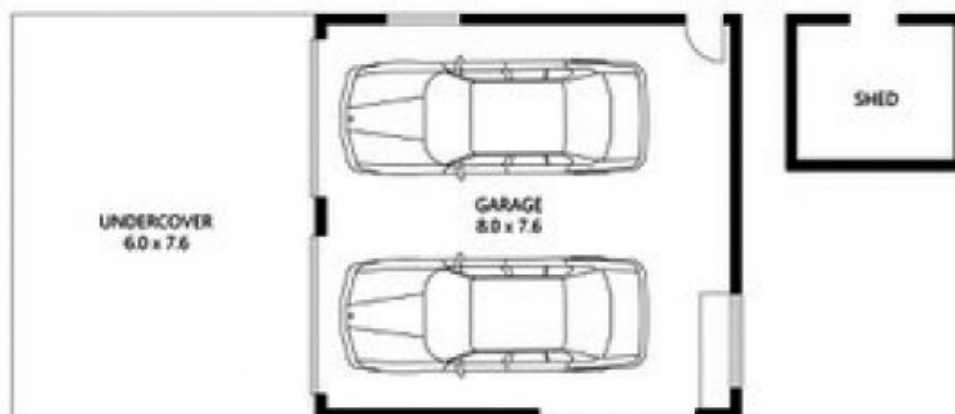
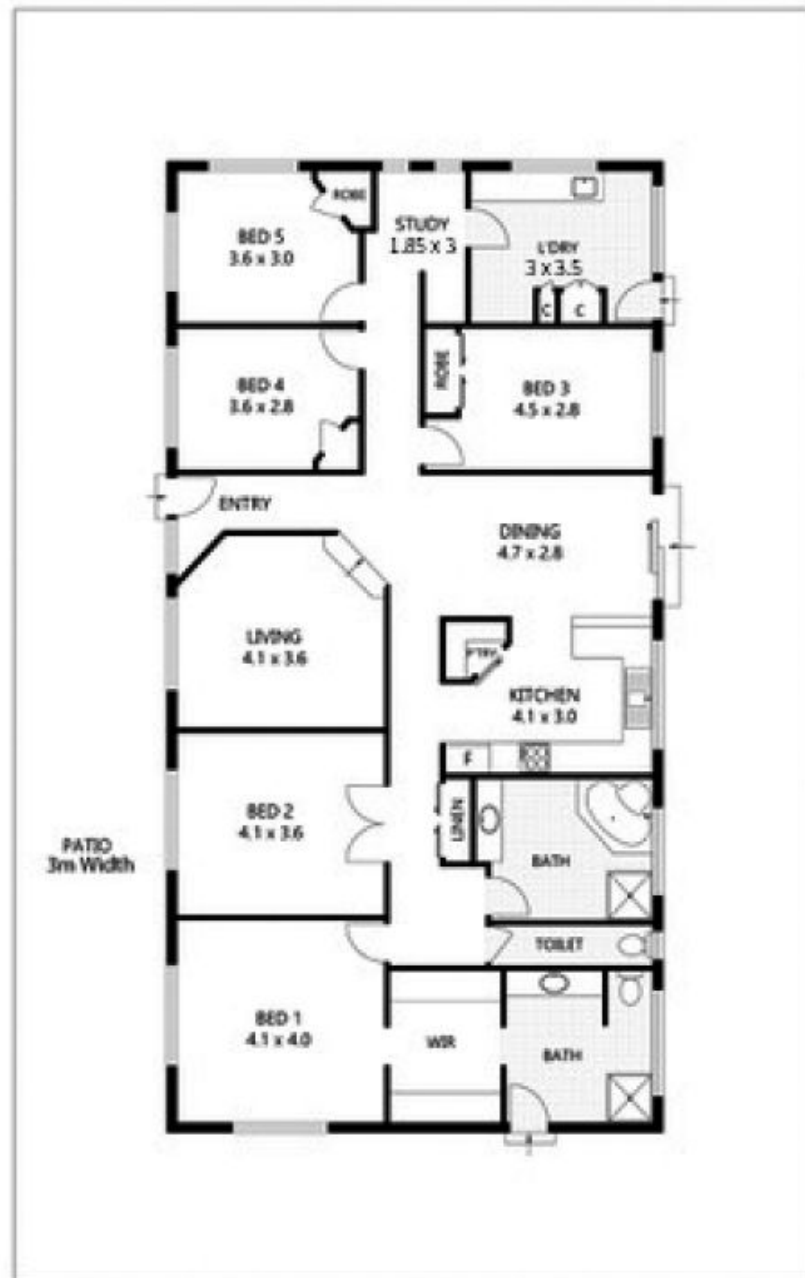
If you are looking for an acreage property with a solid block 5 bedroom home with a huge shed your search is finally over. As you enter this property from the road you immediately know that there is a lot more to this property than meets the eye. From the exterior you have the 3 metre wide wrap around verandahs with attractive bullnose roof that keeps the interior of the home super cool.

The fully air-conditioned home has 5 bedrooms, master has an ensuite and the main bathroom has a spa bath. One of the larger bedrooms can be used as a theatre room or kids separate lounge.. Dining and lounge are served from the fully functional kitchen complete with dishwasher and walkin pantry. There is also a study nook and a huge internal laundry. The home has been fully repainted inside and had new tiles throughout living area whilst the bedrooms have just had new carpet laid.

Price : \$ 530,000
Land Size : 4082 sqm
View : <https://www.kingsberry.com.au/sale/qld/townsville-district/mount-low/residential/house/6686561>



Mario Torrisi
07 4772 2022
0407 636 259
mario.torrisi@tsvharcourts.com.au



Scale in metres. Indicative only. Dimensions are approximate. All information contained herein is gathered from sources we believe to be reliable. However we cannot guarantee its accuracy and interested parties should rely on their own enquiries.

TOTAL UNDER ROOF	-	417m ²
RESIDENCE	-	176m ²
GARAGE	-	61m ²
UNDERCOVER	-	48m ²

184 Mount Low Parkway, Mount Low