

# Harcourts Kingsberry



## 36 Sussex Street Hyde Park QLD

3 2 4

This radiant residence combines a comfortable high set layout with state-of-the-art inclusions to provide a stress-free lifestyle. Contemporary flair and style shines throughout this home spanning over two levels, upper level offering 3 bedrooms, 1 bathroom, kitchen, living and dining areas while the lower level showcases a perfect guest retreat with its own kitchen and bathroom.

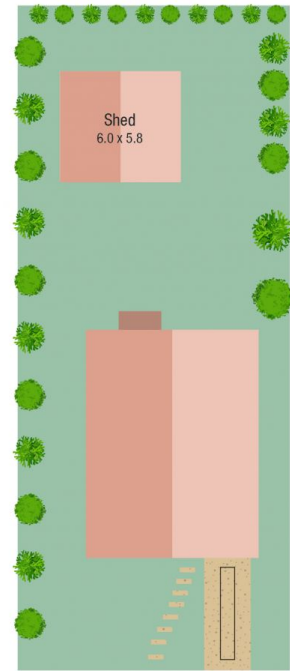
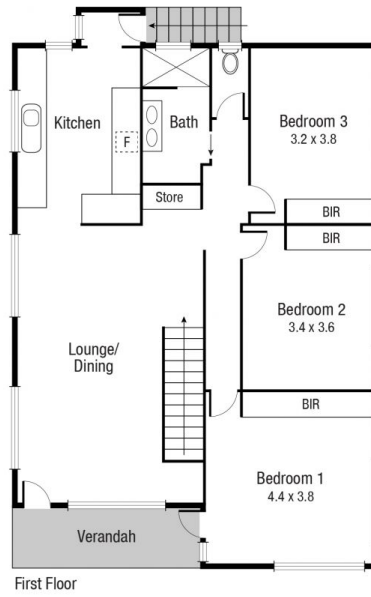
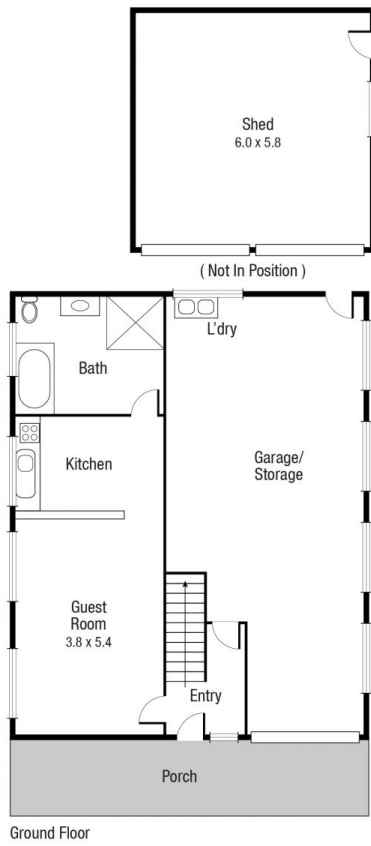
This home offers versatility without compromising on quality or luxury, and easily caters for every possible occasion, extended families, home business or Airbnb.

The upstairs kitchen plays an impressive host highlighting quality appliances and ample of bench and cupboard space. The open plan living flows seamlessly to the front deck with dazzling views to Castle Hill. Polished timber floors glows throughout and blend in nicely with the modern additions. All bedrooms feature split-air conditioning and built-in robes. A sumptuous main bathroom is centrally

**Price** : \$ 570,000  
**Land Size** : 607 sqm  
**View** : <https://www.kingsberry.com.au/sale/qld/townsville-district/hyde-park/residential/house/6738888>



Tammy Tyrrell  
07 4772 2022  
0412 534 704  
[tammy.tyrrell@tsvharcourts.com.au](mailto:tammy.tyrrell@tsvharcourts.com.au)



Scale in metres. Indicative only. Dimensions are approximate. All information contained herein is gathered from sources we believe to be reliable. However we cannot guarantee its accuracy and interested persons should rely on their own enquiries.

**TOTAL AREA : 234.1 sq.m**

**36 Sussex St, Hyde Park**