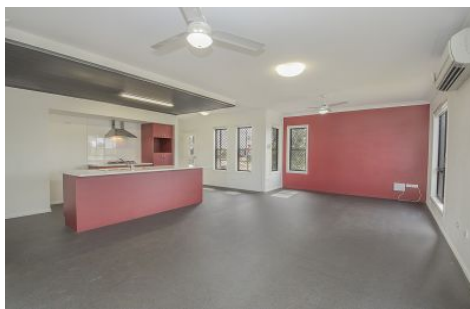
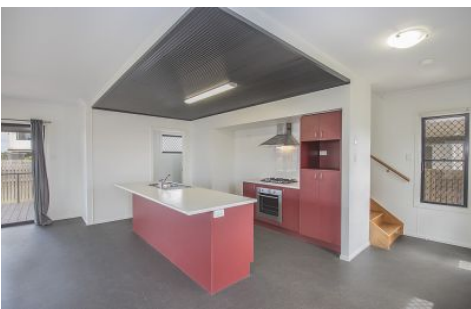


Harcourts Kingsberry



1B Trevalle Entrance Burdell QLD

3  2  1 

****BOOK AN INSPECTION TIME ONLINE - SEE DETAILS BELOW****

This fantastic 3 bedroom townhouse is located in the popular & family friendly suburb of Burdell, right next to the Pirate Park. With access to loads of walking tracks & minutes to various schools and shops, including several major supermarkets, convenience stores & specialty stores. Fresh & Modern, this property is full of features that are sure to impress, including:

Main bedroom has an ensuite & walk in wardrobe.
Central kitchen with island bench & gas cook top.
Large spacious main bathroom with shower over bath.
Third toilet downstairs.
Open plan living area.
Built in wardrobes to bedrooms.

View : <https://www.kingsberry.com.au/lease/qld/townsville-e-district/burdell/residential/house/6786922>



Harcourts Leasing Team
07 4772 2022
0408 778 496

Lauren Wintour

inspections2@tsvharcourts.com.au lauren.wintour@tsvharcourts.com.au