

Harcourts Kingsberry



12 Wattle Street Kirwan QLD

3 1 3

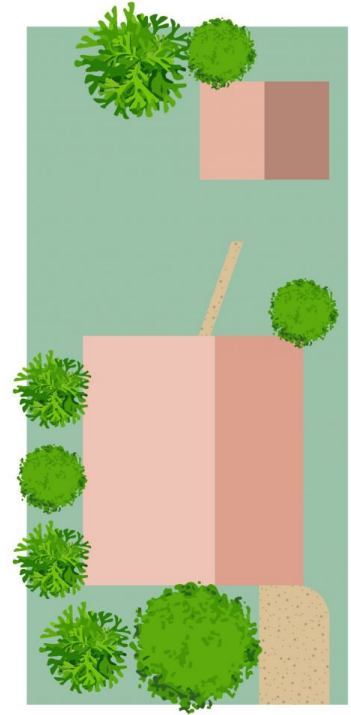
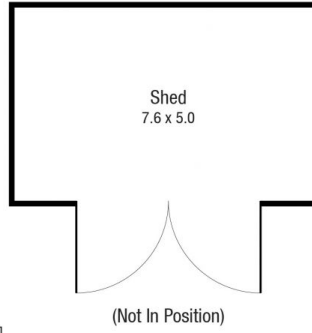
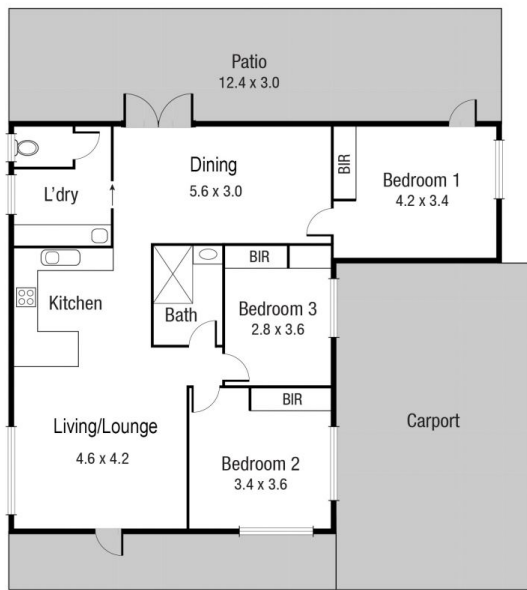
Are you looking for a property where affordability meets style and space? Then this property at 12 Wattle Street, Kirwan is an opportunity to not be missed. The current owners have refreshed the property from top to toe meaning that all the heavy lifting has been done and your only job is to move in.

Upon entering the property, you are greeted with an open plan kitchen/lounge area with all the modern touches. The hallway to the right links you two bedrooms with built in robes and the newly renovated bathroom that wouldn't look out of place in a magazine. Beyond the kitchen there is a large dining area, third bedroom with built in robes and air conditioning, internal laundry and a separate toilet. The stunning French doors connect you to your oversized alfresco area perfect for unwinding.

Land Size : 809 sqm
View : <https://www.kingsberry.com.au/sale/qld/townsville-district/kirwan/residential/house/6819759>



Adrian Raiteri
07 4772 2022
0427 673 612
adrian.raiteri@tsvharcourts.com.au



Scale in metres. Indicative only. Dimensions are approximate. All information contained herein is gathered from sources we believe to be reliable. However we cannot guarantee its accuracy and interested persons should rely on their own enquiries.

12 Wattle St, Kirwan