

Harcourts Kingsberry



12 Wattle Street Kirwan QLD

3 1 3

****BOOK AN INSPECTION TIME ONLINE - SEE DETAILS BELOW****

This lovely home presents refreshing, modern features throughout, all whilst being situated on a spacious 809sqm block on the fringe of Kirwan.

Located within close proximity to Willows Shopping Centre, Riverway, Cannon Park, Schools, parks, sporting facilities and public transport.

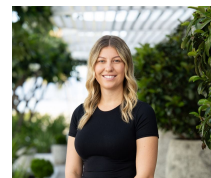
Property features:

- Open plan living area features brand new split system air-conditioning.
- Dining space with direct access to the alfresco area.
- Modern kitchen centrally location in the house, features ample bench and cupboard space and dishwasher.

View : <https://www.kingsberry.com.au/lease/qld/townsville-e-district/kirwan/residential/house/6879272>



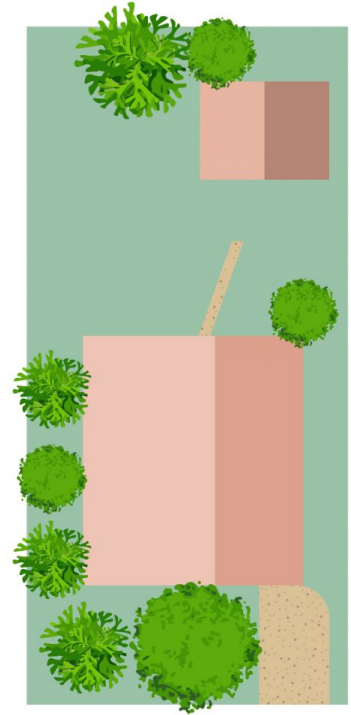
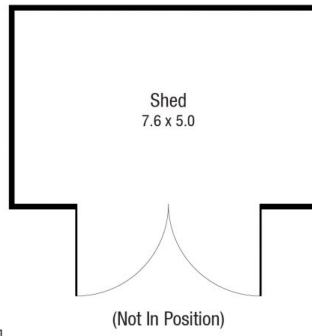
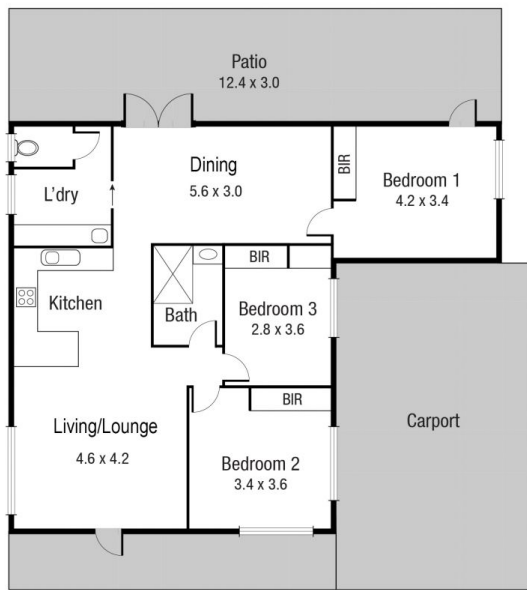
Harcourts Leasing Team
07 4772 2022
0408 778 496
inspections2@tsvharcourts.com.au



Katie Ardouin
07 4772 2022
0431 612 938
katie.a@tsvharcourts.com.au

<https://www.kingsberry.com.au>

210 Charters Towers Road Hermit Park QLD
07 47 722 022



Scale in metres. Indicative only. Dimensions are approximate. All information contained herein is gathered from sources we believe to be reliable. However we cannot guarantee its accuracy and interested persons should rely on their own enquiries.

TOTAL AREA : 146.1 sq.m

12 Wattle St, Kirwan