

# Harcourts Kingsberry



## 24 Chesney Road Mount Low QLD

3  1  2 

Have you been looking for the perfect acreage property with plenty of space for your lifestyle but not wanting to compromise on a central location? Then this property located at 24 Chesney Road, Mount Low is the one for you.

**Land Size** : 4000 sqm

**View** : <https://www.kingsberry.com.au/sale/qld/townsville-district/mount-low/residential/acreage-semirural/6885670>

Situated on a large 4,000sqm block only minutes' walk to schools and shops, this property needs some cosmetic work internally, but the bones are good, the location is great, and the land size is even better.

This red brick residence features three bedrooms complete with built in robes and ceiling fans. The main bedroom is air-conditioned for those summer nights. The kitchen is very practical and flows nicely into the large open plan living/dining area featuring a built-in bar. The bathroom features a walk-in shower and vanity. There is also a

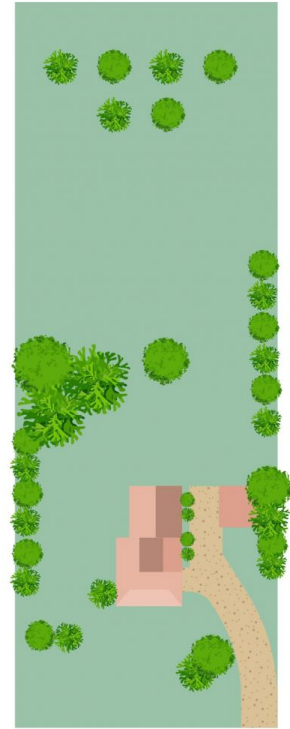
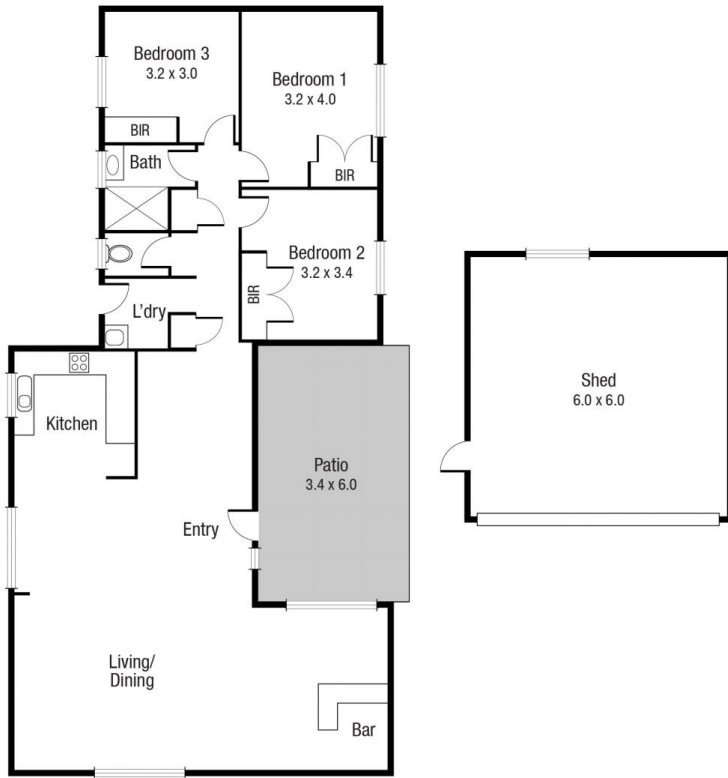


**Adrian Raiteri**

07 4772 2022

0427 673 612

[adrian.raiteri@tsvharcourts.com.au](mailto:adrian.raiteri@tsvharcourts.com.au)



Scale in metres. Indicative only. Dimensions are approximate. All information contained herein is gathered from sources we believe to be reliable. However we cannot guarantee its accuracy and interested persons should rely on their own enquiries.

TOTAL AREA : 132.2 sq.m

24 Chesney Rd, Mount Low