

# Harcourts Kingsberry



## 20 Clarendon Street Hyde Park QLD

3 1 1

This delightful character home on 761sqm is looking for new love and inspiration. It has enjoyed the devotion of the same family for its current lifetime. Centrally located close to major transport links, schools, shopping centres and the CBD it was designed and sited to maximise the effect of the prevailing sea breeze.

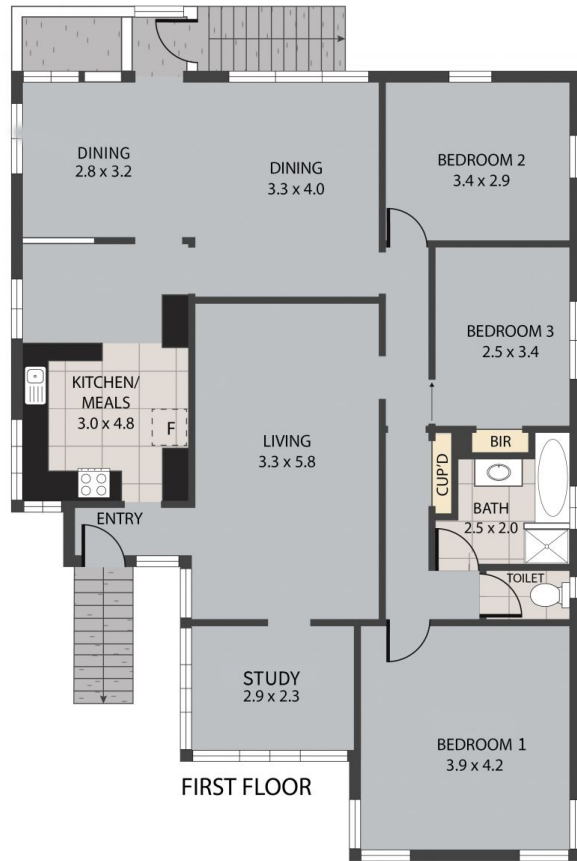
If you enjoy renovating, this home will make an ideal project. It was given a new roof in 2011 and it has an extra toilet and plenty of space underneath.

- 3 bedrooms plus a study/sitting room
- 2 living areas plus large kitchen
- Close to excellent schools, childcare centres, and parks
- Mere minutes to major shopping centres
- 2 minutes to the Mater Hospital
- 5 minutes to the airport
- 5 minutes to The Strand

**Price** : \$ 299,000  
**Land Size** : 761 sqm  
**View** : <https://www.kingsberry.com.au/sale/qld/townsville-district/hyde-park/residential/house/6897384>



Malcolm Thomson  
07 4772 2022  
0400 545 664  
[malcolm.thomson@tsvharcourts.com.au](mailto:malcolm.thomson@tsvharcourts.com.au)



20 Clarendon Street, Hyde Park 4812

Whilst every attempt has been made to ensure the accuracy of the floor plan contained here, measurements of doors, windows, rooms and any other items are approximate and no responsibility is taken for any error, omission, or misstatement. This plan is for illustrative purposes only and should be used as such by any prospective purchaser.