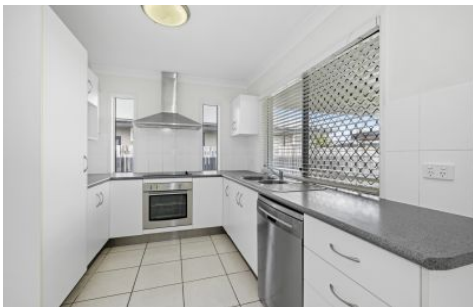


Harcourts Kingsberry



4 Boulton Crescent Burdell QLD

3 2 2

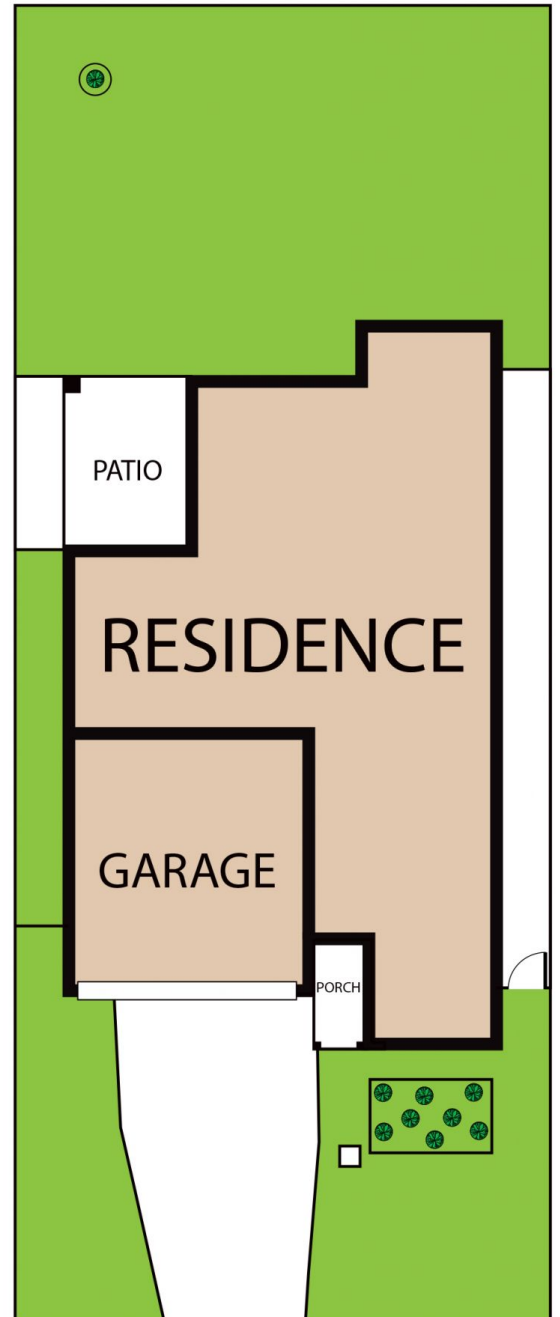
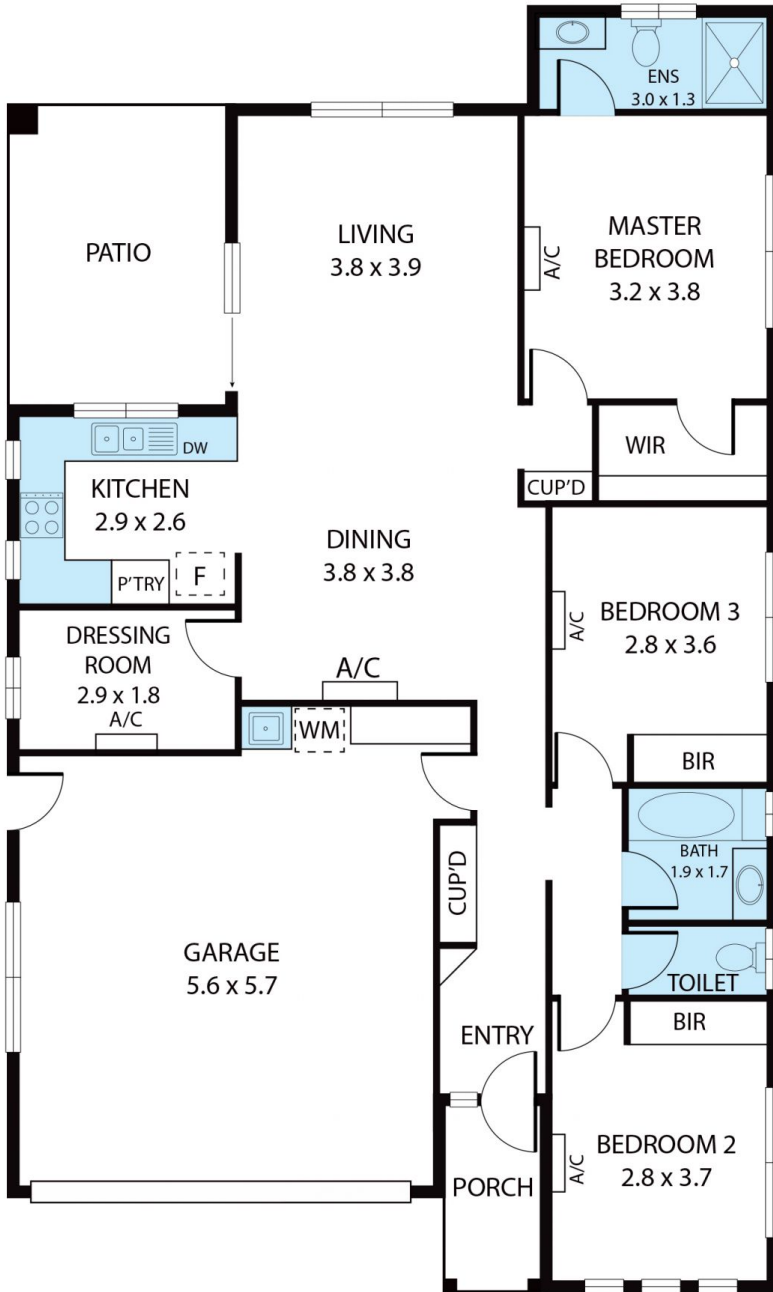
Move in ready, or perfect investment addition to your portfolio. Perched on a comfortable 450m², fully fenced allotment, in a family friendly pocket of Burdell.

- Three generous sized bedrooms, all fully air conditioned with built in wardrobes
- Cooling neutral floor tiles throughout
- Stunning white timber blinds fitted to the majority of the windows, adding that extremely stylish touch, with the addition of modern drop-down blinds
- Fully air-conditioned for your comfort in our North Queensland climate
- Main bedroom boasting its own private ensuite
- Lovely fitted colonial style doors to all rooms
- Family bathroom with stand over shower/bath

Price : \$ 390,000
Land Size : 450 sqm
View : <https://www.kingsberry.com.au/sale/qld/townsville-district/burdell/residential/house/6915589>



Stephanie Turnbull
07 4772 2022
0459 528 095
stephanie.turnbull@tsvharcourts.com.au



4 Bolt Crescent, Burdell 4818

Whilst every attempt has been made to ensure the accuracy of the floor plan contained here, measurements of doors, windows, rooms and any other items are approximate and no responsibility is taken for any error, omission, or misstatement. This plan is for illustrative purposes only and should be used as such by any prospective purchaser.