

Harcourts Kingsberry



1 Calliandra Court Mount Louisa QLD

4 2 2

Located in a quiet pocket of Mount Louisa, this well-maintained family home is now available with nothing more to do than to move the furniture straight in and enjoy the many great features that the property and location has to offer.

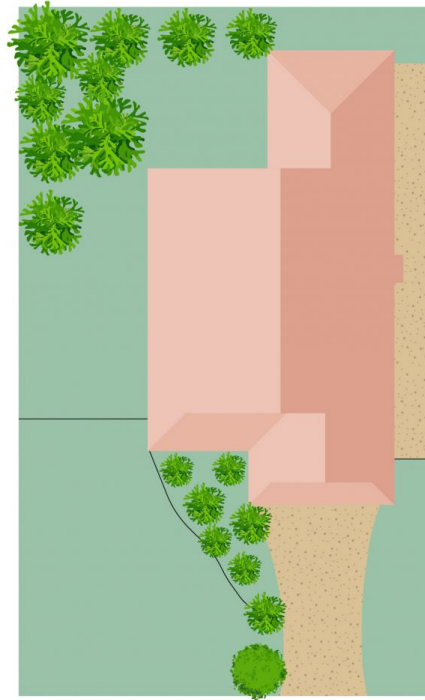
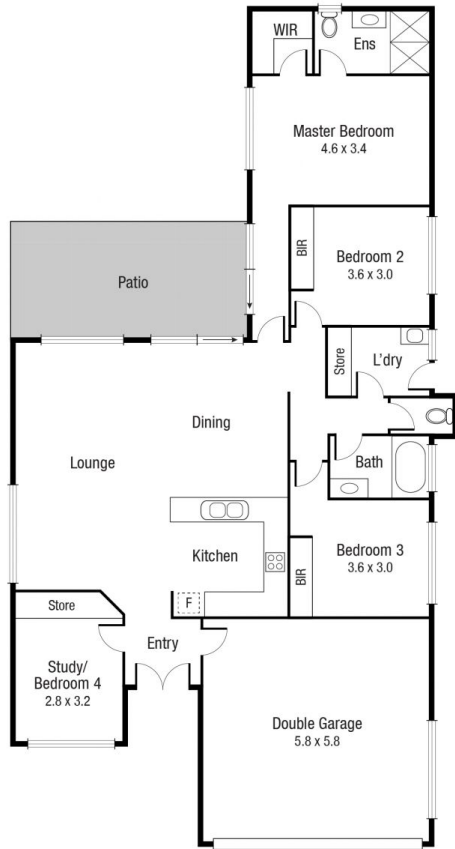
The house sits proudly on a 608sqm allotment with genuine double gate side access and no rear neighbours. The house is perfectly positioned on the block making a pool or shed the perfect addition to the property. The four-bedroom residence has just been fully repainted internally and offers a spacious kitchen, large open plan living/dining area featuring cathedral ceilings, two bathrooms and double car accommodation. There is also an oversized alfresco area perfect for entertaining friends and family all year round.

Property Offers but is not limited to:

Price : \$ 420,000
Land Size : 608 sqm
View : <https://www.kingsberry.com.au/sale/qld/townsville-district/mount-louisa/residential/house/6931003>



Adrian Raiteri
07 4772 2022
0427 673 612
adrian.raiteri@tsvharcourts.com.au



Scale in metres. Indicative only. Dimensions are approximate. All information contained herein is gathered from sources we believe to be reliable. However we cannot guarantee its accuracy and interested persons should rely on their own enquiries.

TOTAL AREA : 180.9 sq.m

1 Calliandra Ct, Mount Louisa