

# Harcourts Kingsberry



## 6 Kent Street Gulliver QLD

3 1 2

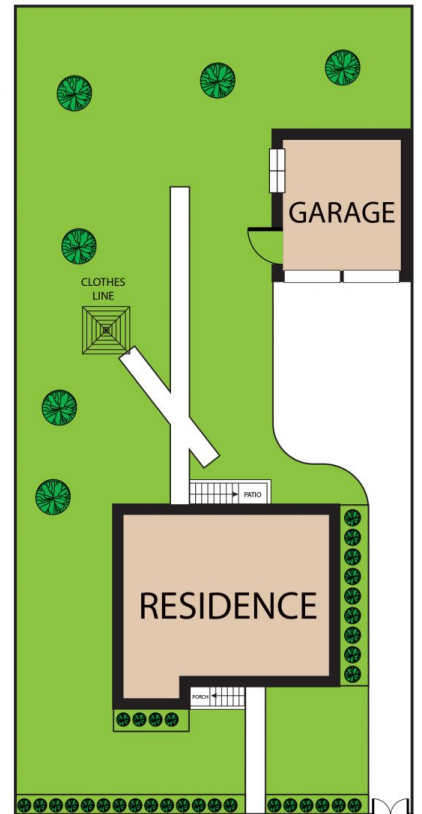
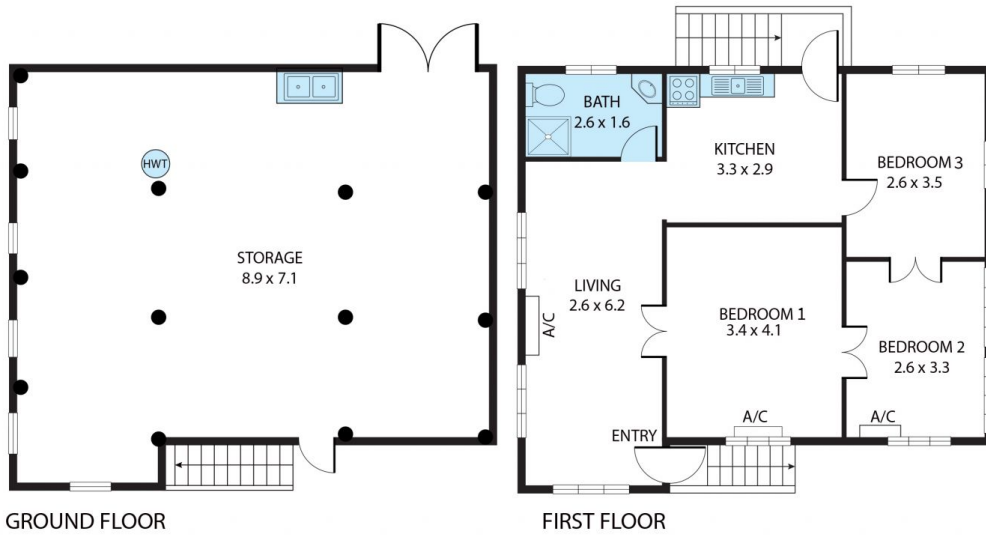
This post-war Queenslander on an 809sqm block, in a prime position in Gulliver, has a double bay colorbond shed to enhance its appeal. As a highset home, and concreted underneath, storage space is plentiful. Apply your personal touch and renovate to your heart's content to give this unpolished gem its rightful lustre.

- Tongue in groove walls and timber floors
- Casement windows
- Split system air-conditioning
- Close to excellent schools, childcare centres, and parks
- Mere minutes to major shopping centres
- 5 minutes to the Mater Hospital
- 5 minutes to the airport
- Concrete driveway to the shed
- Recently rented at \$350pw.

**Price** : \$ 260,000  
**Land Size** : 809 sqm  
**View** : <https://www.kingsberry.com.au/sale/qld/townsville-district/gulliver/residential/house/6932768>



Malcolm Thomson  
07 4772 2022  
0400 545 664  
[malcolm.thomson@tsvharcourts.com.au](mailto:malcolm.thomson@tsvharcourts.com.au)



## 6 Kent Street, Gulliver 4812

Whilst every attempt has been made to ensure the accuracy of the floor plan contained here, measurements of doors, windows, rooms and any other items are approximate and no responsibility is taken for any error, omission, or misstatement. This plan is for illustrative purposes only and should be used as such by any prospective purchaser.