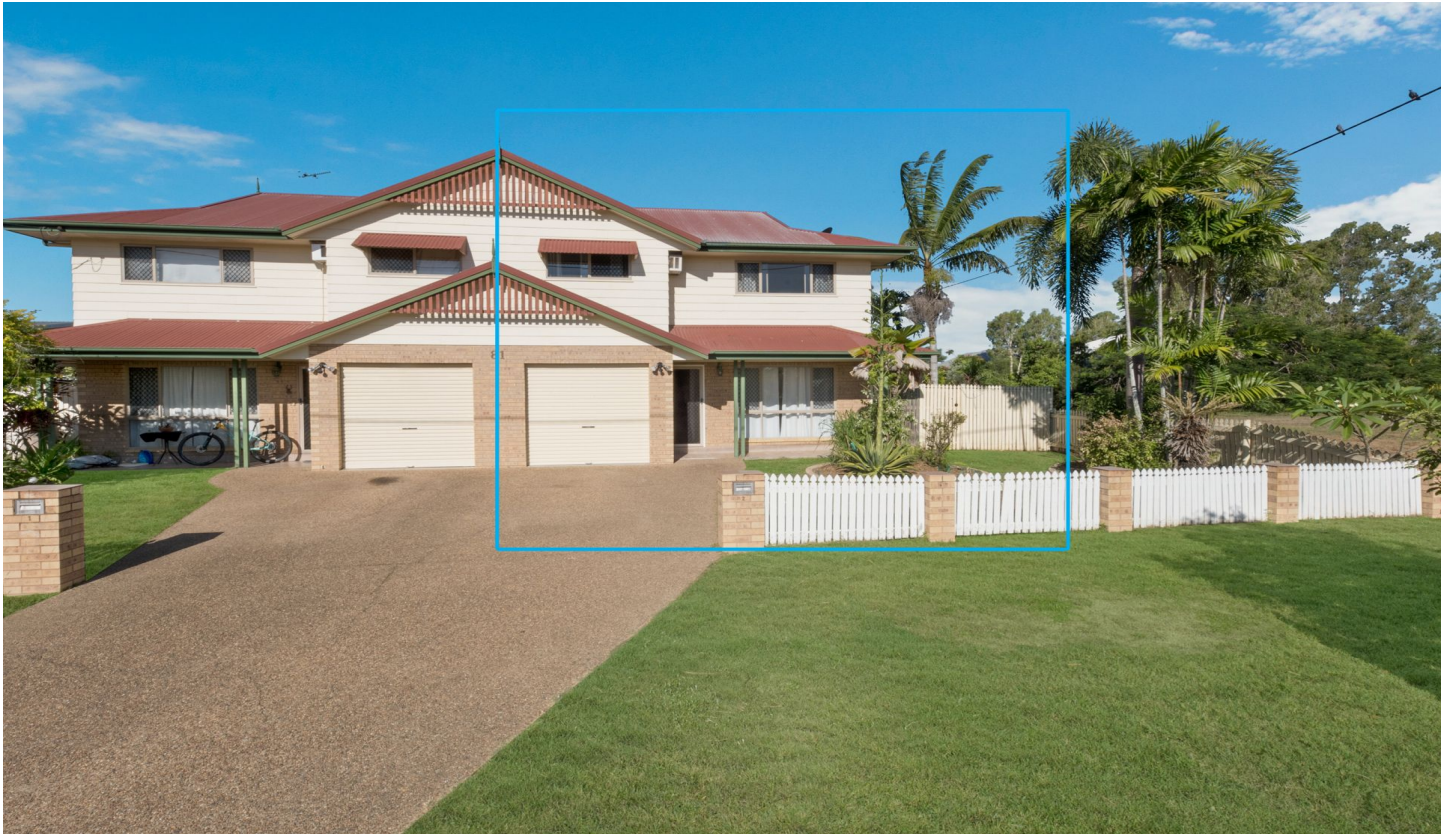


Harcourts Kingsberry



2/81 Twelfth Avenue Railway Estate QLD

3 1 1

Are you looking to dip your toe into the Townsville Real Estate market and don't want to compromise on space and location? Or are you looking for a great low maintenance investment opportunity with strong rental history and capital growth opportunities? Then this townhouse located at 2/81 Twelfth Avenue, Railway Estate is the perfect property for you.

Having street frontage and a corner position, it will be super easy to forget that you are living in a complex. Downstairs there is a lounge/living area, a separate dining that is located adjacent to the spacious kitchen that features ample bench and cupboard space. The second toilet and internal laundry although very convenient are located out of sight. There is also a rear private patio and exclusive use courtyard which adds to the overall appeal of the property

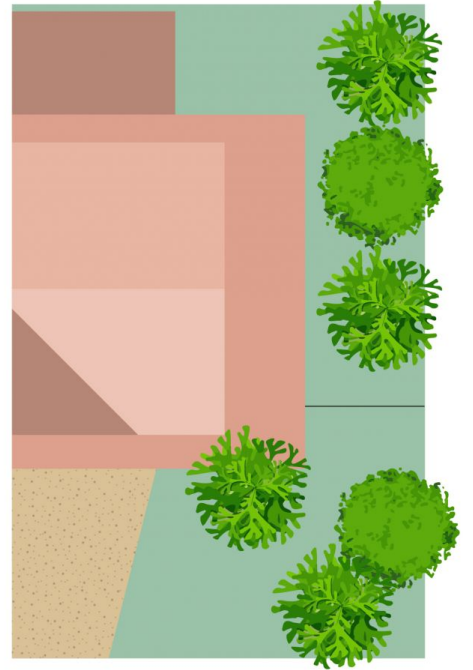
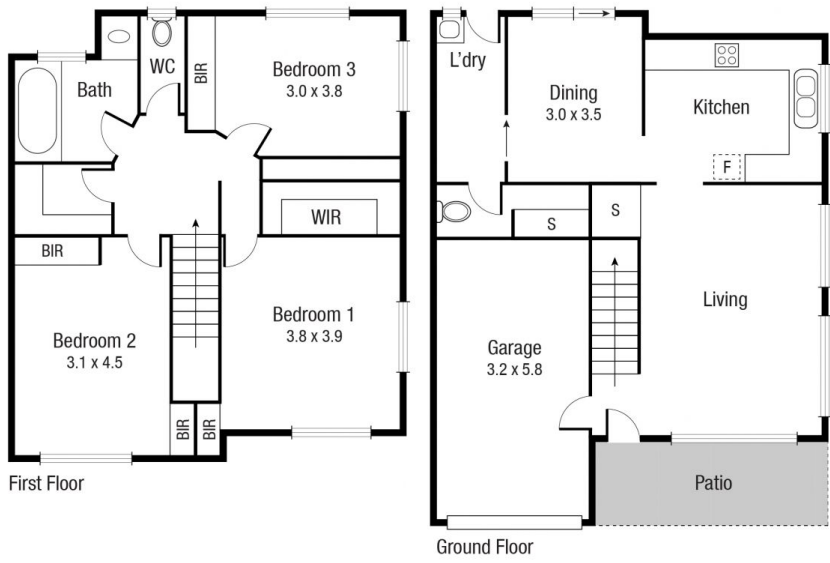
Price : \$ 250,000

View : <https://www.kingsberry.com.au/sale/qld/townsville-e-district/railway-estate/residential/townhouse/6941872>



Adrian Raiteri
07 4772 2022
0427 673 612

adrian.raiteri@tsvharcourts.com.au



Scale in metres. Indicative only. Dimensions are approximate. All information contained herein is gathered from sources we believe to be reliable. However we cannot guarantee its accuracy and interested persons should rely on their own enquiries.

TOTAL AREA : 154.5 sq.m

Unit 2, 81/91 Twelfth Av, Railway Estate