

Harcourts Kingsberry



85 Tasman Circuit Burdell QLD

3 2 2

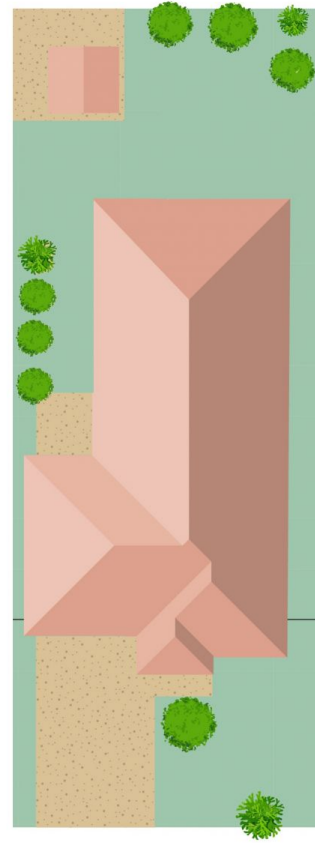
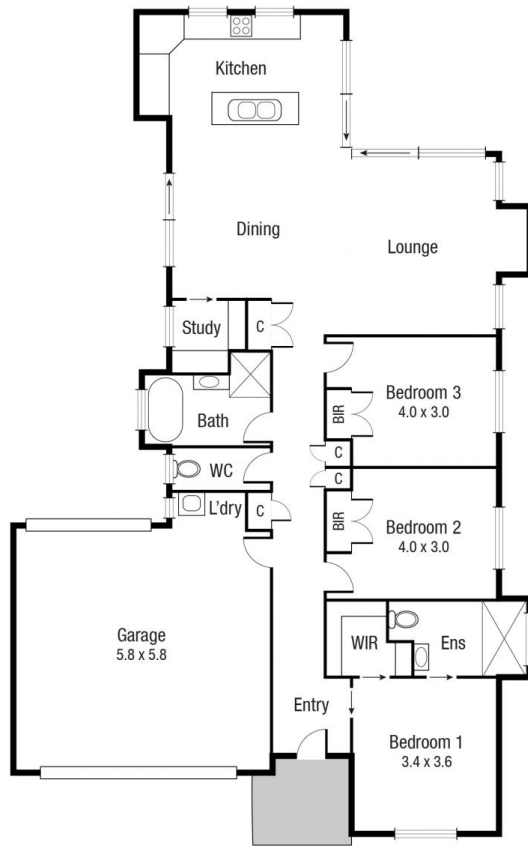
Situated in a quiet pocket of Burdell on a low maintenance 417sqm block with no rear neighbours, this immaculately presented property located at 85 Tasman Circuit, Burdell is true turnkey living with nothing more to do than move the furniture straight in and start living your best life.

The house is near on eight years old and was built by AP Williams & Co. The modern residence was designed with family in mind and features three bedrooms complete with built in robes and split system air-conditioning. The master comes complete with a stylish ensuite and walk in robe. The central kitchen is perfect for the home chef and features a large island bench overlooking the open plan living and dining area. In addition, there is stacker doors that open onto the covered alfresco area ensuring that everyone can be a part of the conversation. There is also a private study nook/office that closes off the main living

Price : \$ 395,000
Land Size : 417 sqm
View : <https://www.kingsberry.com.au/sale/qld/townsville-district/burdell/residential/house/7047321>



Adrian Raiteri
07 4772 2022
0427 673 612
adrian.raiteri@tsvharcourts.com.au



Scale in metres. Indicative only. Dimensions are approximate. All information contained herein is gathered from sources we believe to be reliable. However we cannot guarantee its accuracy and interested persons should rely on their own enquiries.

85 Tasman Cct, Burdell