

Harcourts Kingsberry



6 Puffer Place Mount Louisa QLD

3 2 2

Experience this former luxury display home with a finish to match. Designed with an extra high 3.2m raked ceiling matched with contemporary electrical fittings with LED downlights and split-system air-conditioning.

The heart of the home is a light filled central open plan living room with a separate meals and sitting areas as well as a striking contemporary kitchen. Lots of cupboards, stone bench tops, induction cooktop and flush mounted appliances. There are sliding glass doors on two sides which bring the outside in.

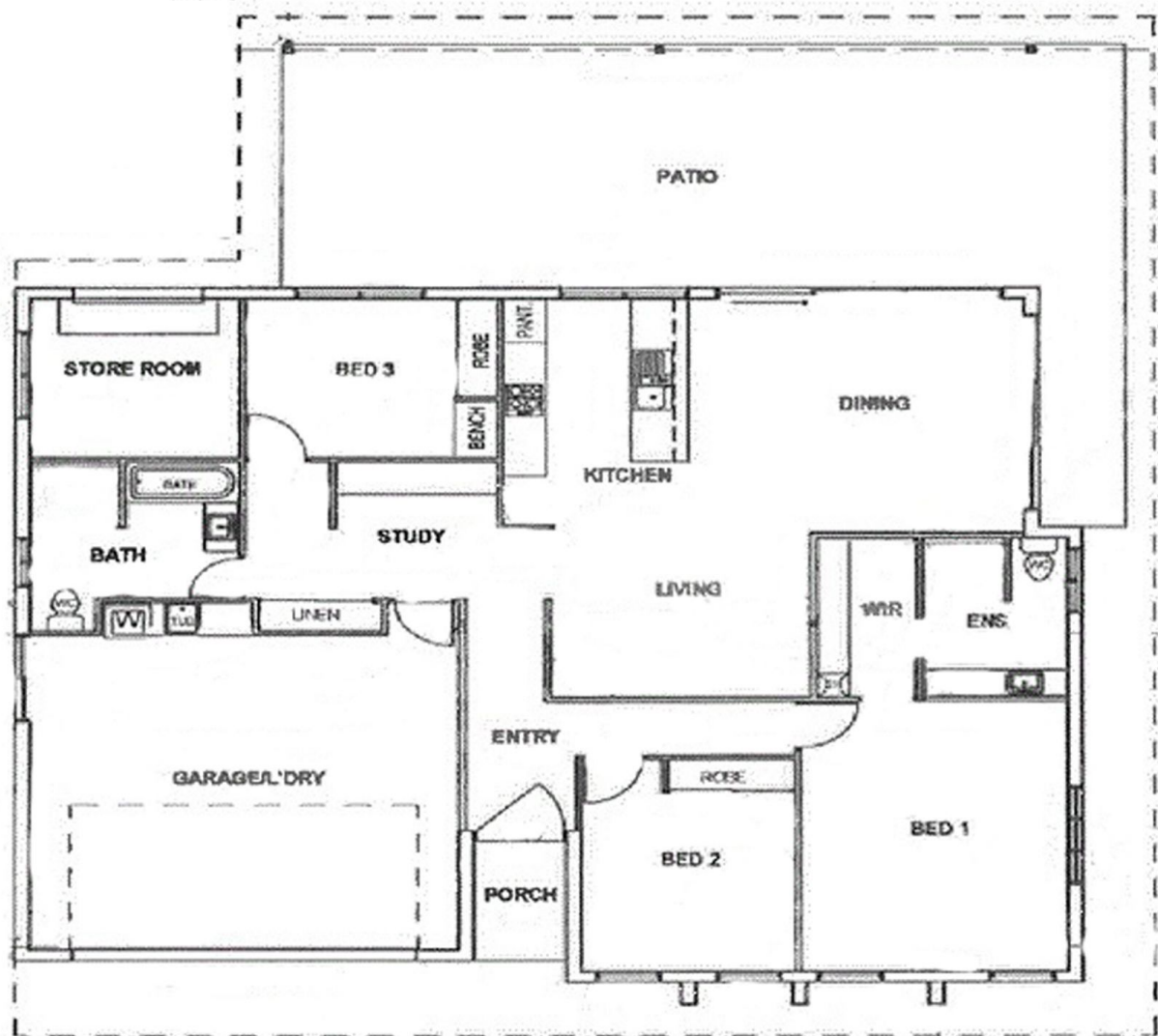
The carpeted master bedroom is generously proportioned, to the left is the walk-in robe with timber cabinetry and there is a stunning ensuite. This is tiled floor to ceiling and features a walk-in shower with rain head and timber top vanity.

Price : \$ 470,000
Land Size : 530 sqm
View : <https://www.kingsberry.com.au/sale/qld/townsville-district/mount-louisa/residential/house/7133333>



Michael Martini

0418 731 677
michael.martini@tsvharcourts.com.au



6 Puffer Place, Mt Louisa