

# Harcourts Kingsberry



## 83 Tasman Circuit Burdell QLD

4 2 2

Designed and built with family and modern living at the forefront, this immaculate home at 83 Tasman Circuit, Burdell represents incredible value and there is nothing left to do than to move the furniture straight in and start enjoying the many great features on offer.

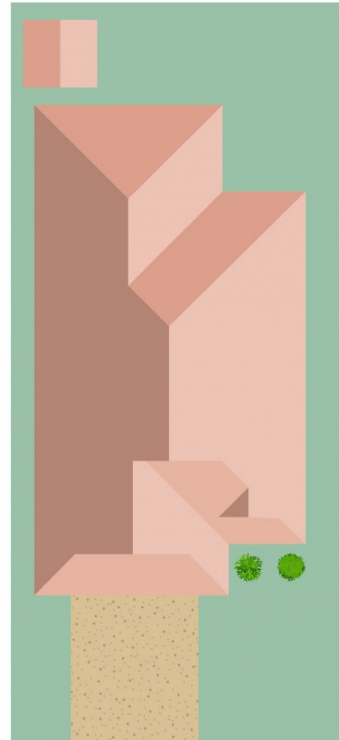
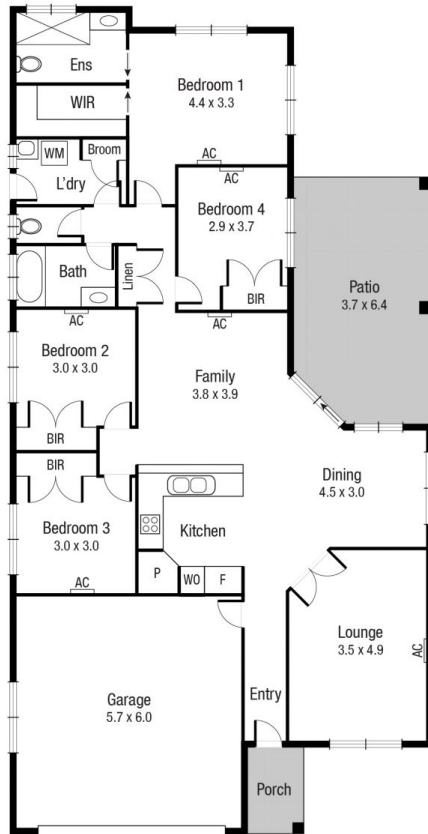
The residence is comfortably positioned on a 504sqm low maintenance block with no rear neighbours. The house was built by AP Williams & Co approximately 8 years ago and offers a great alternative to those looking to build their first home but not wanting to pay a fortune and wait a lifetime. It also offers a perfect investment opportunity for those savvy investors wanting to add an immaculate set and forget property to their portfolio in a high growth property market.

The home features four generous bedrooms, two living

**Price** : \$ 445,000  
**Land Size** : 504 sqm  
**View** : <https://www.kingsberry.com.au/sale/qld/townsville-district/burdell/residential/house/7156161>



Adrian Raiteri  
07 4772 2022  
0427 673 612  
[adrian.raiteri@tsvharcourts.com.au](mailto:adrian.raiteri@tsvharcourts.com.au)



Scale in metres. Indicative only. Dimensions are approximate. All information contained herein is gathered from sources we believe to be reliable. However we cannot guarantee its accuracy and interested persons should rely on their own enquiries.

TOTAL AREA : 202.1 sq.m

83 Tasman Cct