

Harcourts Kingsberry



10 Bulimba Way Bohle Plains QLD

7 2 2

This bespoke, executive family home has been custom-built meticulously to suit even the biggest of families or those who enjoy the comfort of space and privacy. Substantial in size, this home boasts seven great-sized bedrooms (one bedroom would be suitable as a study) all fitted with split system air conditioning, ceiling fans, and built-in wardrobes. The master suite is situated at the rear of the home and comes equipped with split system air conditioning, a ceiling fan, and a private ensuite that comes fitted with a large double vanity, twin shower heads, a separate toilet, and a personal linen closet.

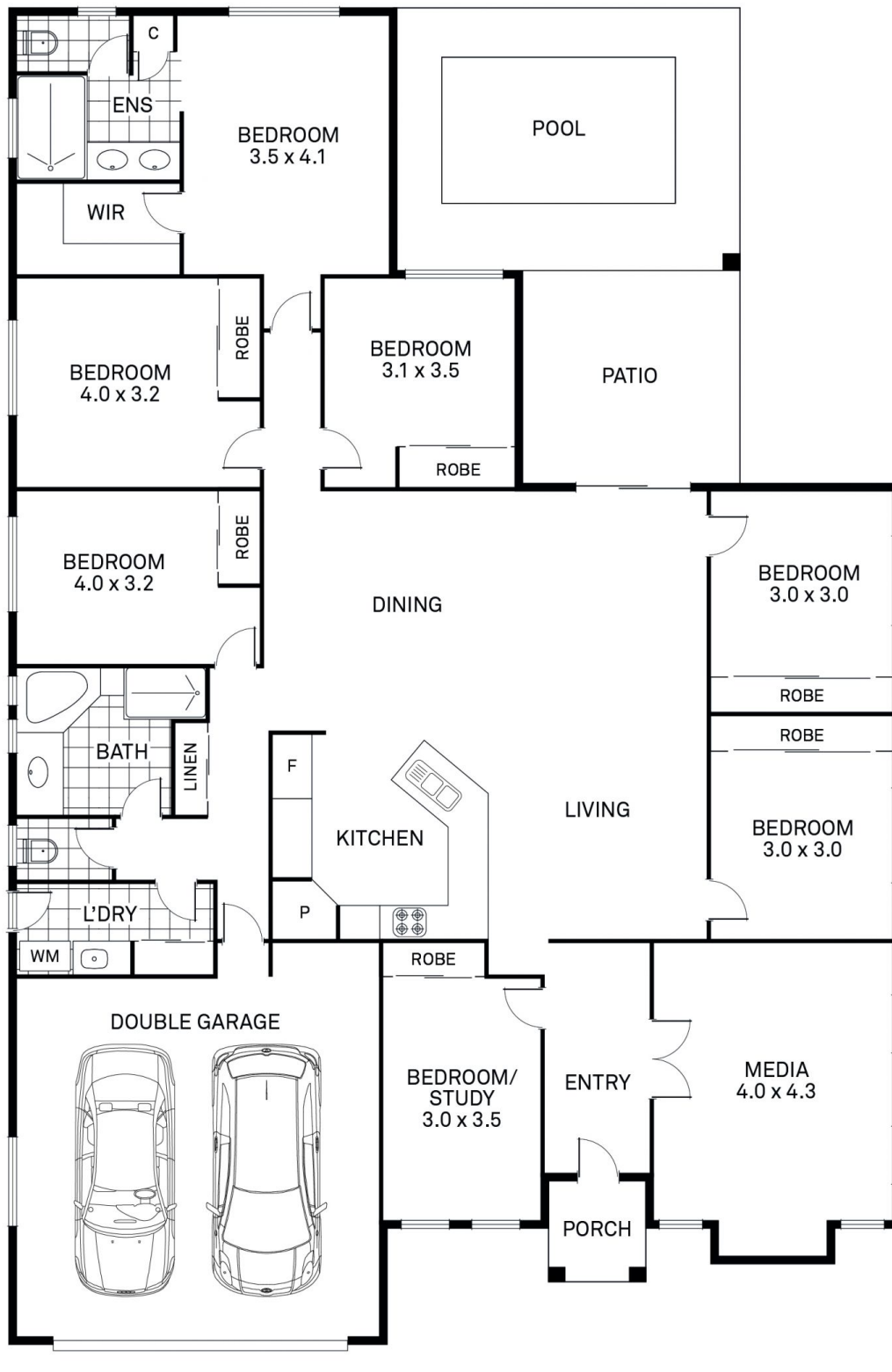
The home offers multiple of large living areas for the family to spread out, with the dedicated media room located at the front of the home, you won't ever worry about disturbing the rest of the family when you're watching a loud movie on your home theatre system. Central to the home, you will be

Price : \$ 622,500
Land Size : 695 sqm
View : <https://www.kingsberry.com.au/sale/qld/townsville-district/bohle-plains/residential/house/7210243>



Jayden Evans
07 4772 2022
0477 543 617
jayden.evans@tsvharcourts.com.au

10 Bulimba Way, Bohle Plains



AREA (M²)

HOUSE	- 227.2
PATIO/PORCH	- 18.6
GARAGE	- 38.1
TOTAL	- 283.9