

Harcourts Kingsberry



7 The Close Idalia QLD

4  2  2 

From the moment that you step into this elegant family home you will be blown away by the sheer space and size of this property. Truly an entertainer's delight offering a wide selection of entertaining options.

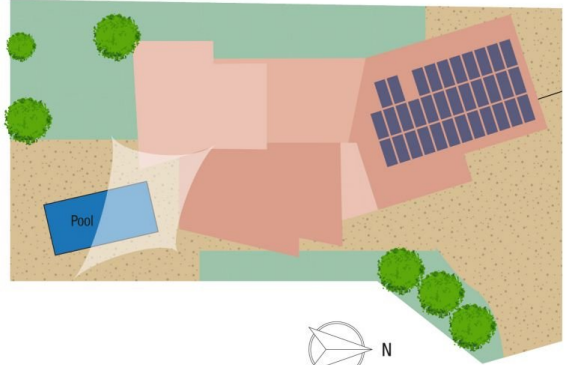
The open plan architectural design allows the kitchen to be the hub of the home and brings the main living areas to life. With the bonus of a rumpus, plus separate living and dining areas. The delicious kitchen showcases ample bench tops with a relaxing breakfast bar and premium appliances including stylish double black sink and dishwasher. Seamlessly integrating through a spacious servery window onto the adorable outdoor entertaining area overlooking the stunning inground pool - perfect entertainer!!

Warm and welcoming space continues to shine throughout the home with 4 generous bedrooms. The master bedroom is sure to impress delivering its own sweet retreat complete with walk in robe, elegant ensuite offering corner spa bath,

Price : \$ 670,000
Land Size : 803 sqm
View : <https://www.kingsberry.com.au/sale/qld/townsville-district/idalia/residential/house/7230067>



Tammy Tyrrell
07 4772 2022
0412 534 704
tammy.tyrrell@tsvharcourts.com.au



Scale in metres. Indicative only. Dimensions are approximate. All information contained herein is gathered from sources we believe to be reliable. However we cannot guarantee its accuracy and interested persons should rely on their own enquiries.

TOTAL AREA : 264 sq.m

7 The Close, Idalia