

Harcourts Kingsberry



41 Bamboo Crescent Mount Louisa QLD

4 2 2

Built by AP Williams and positioned on a large 800sqm block in an exclusive pocket of Greenview Estate, this quality family home offers enough space for the entire family to sprawl out with the opportunity to move in before Christmas and enjoy the many great features this property has to offer.

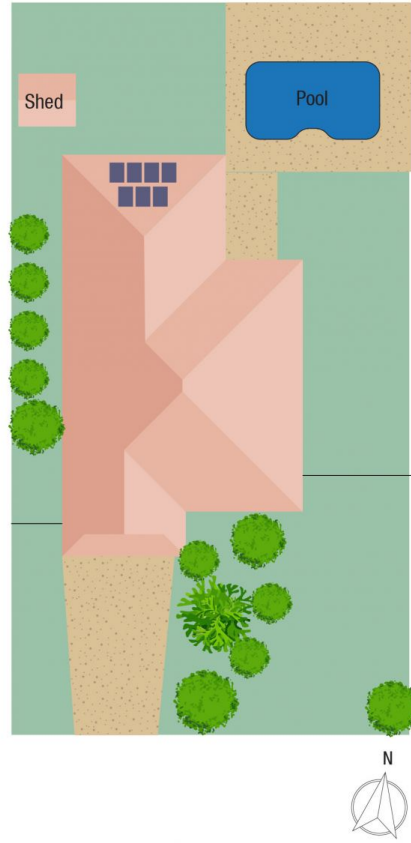
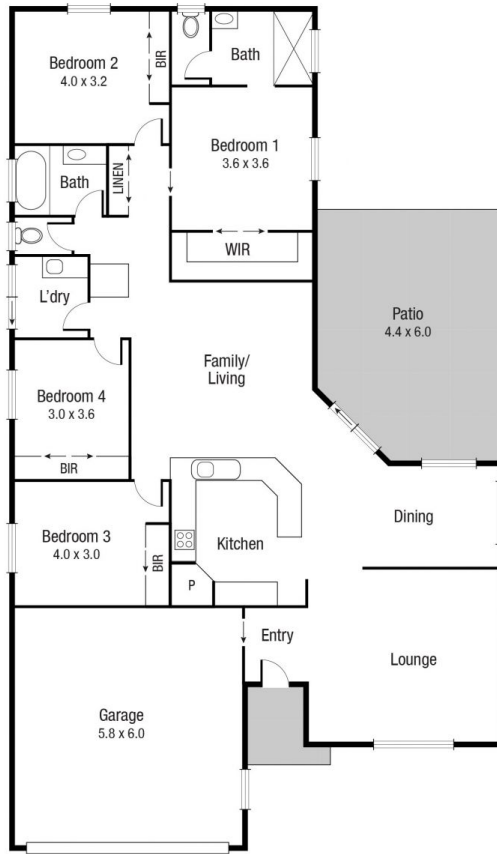
Entering the residence through the front door, you are greeted with a spacious family room. Continuing, you arrive at a timber kitchen that acts as the hub of the home and is centrally located between the living, dining, and entertaining area to ensure the cook is always apart of the conversation. There is four spacious bedrooms with split system cooling and built-in robes and the master bedroom is complete with double shower ensuite and walk in robe.

Outside, the property is an entertainers dream with a large

Price : \$ 510,000
Land Size : 800 sqm
View : <https://www.kingsberry.com.au/sale/qld/townsville-district/mount-louisa/residential/house/7284934>



Adrian Raiteri
07 4772 2022
0427 673 612
adrian.raiteri@tsvharcourts.com.au



Scale in metres. Indicative only. Dimensions are approximate. All information contained herein is gathered from sources we believe to be reliable. However we cannot guarantee its accuracy and interested persons should rely on their own enquiries.

TOTAL AREA : 215.2 sq.m

41 BAMBOO